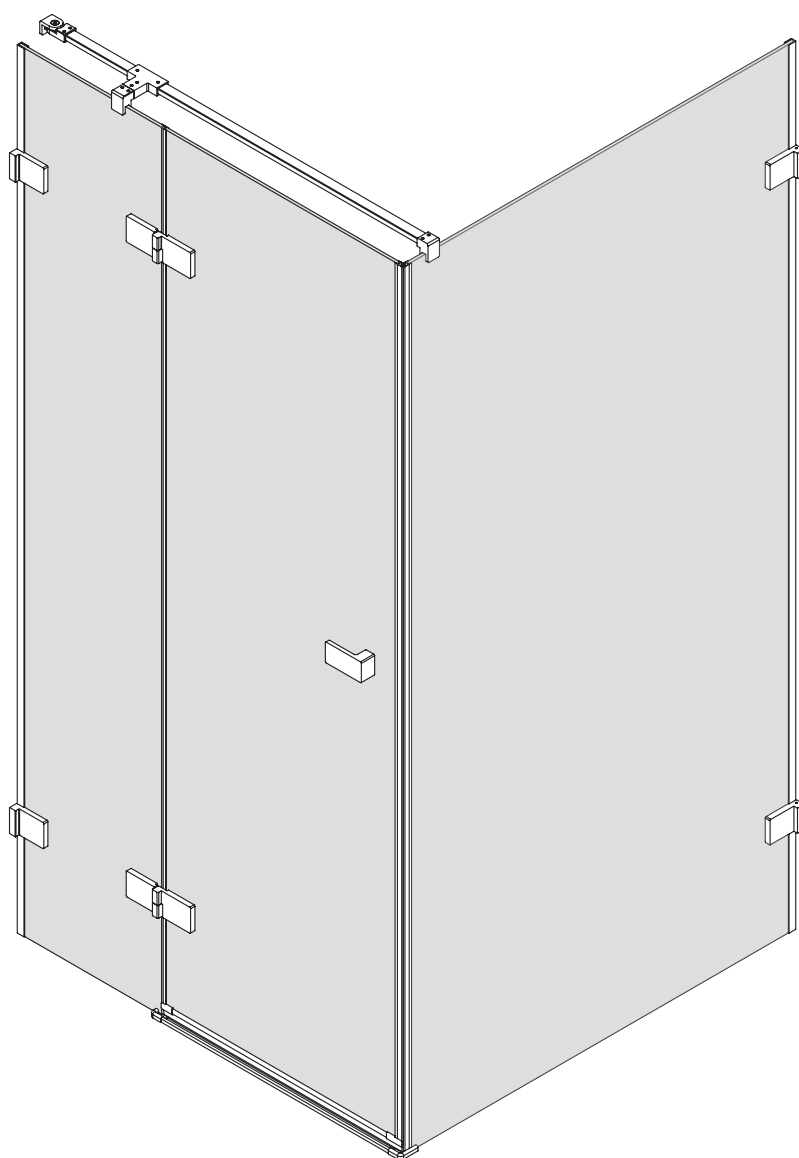
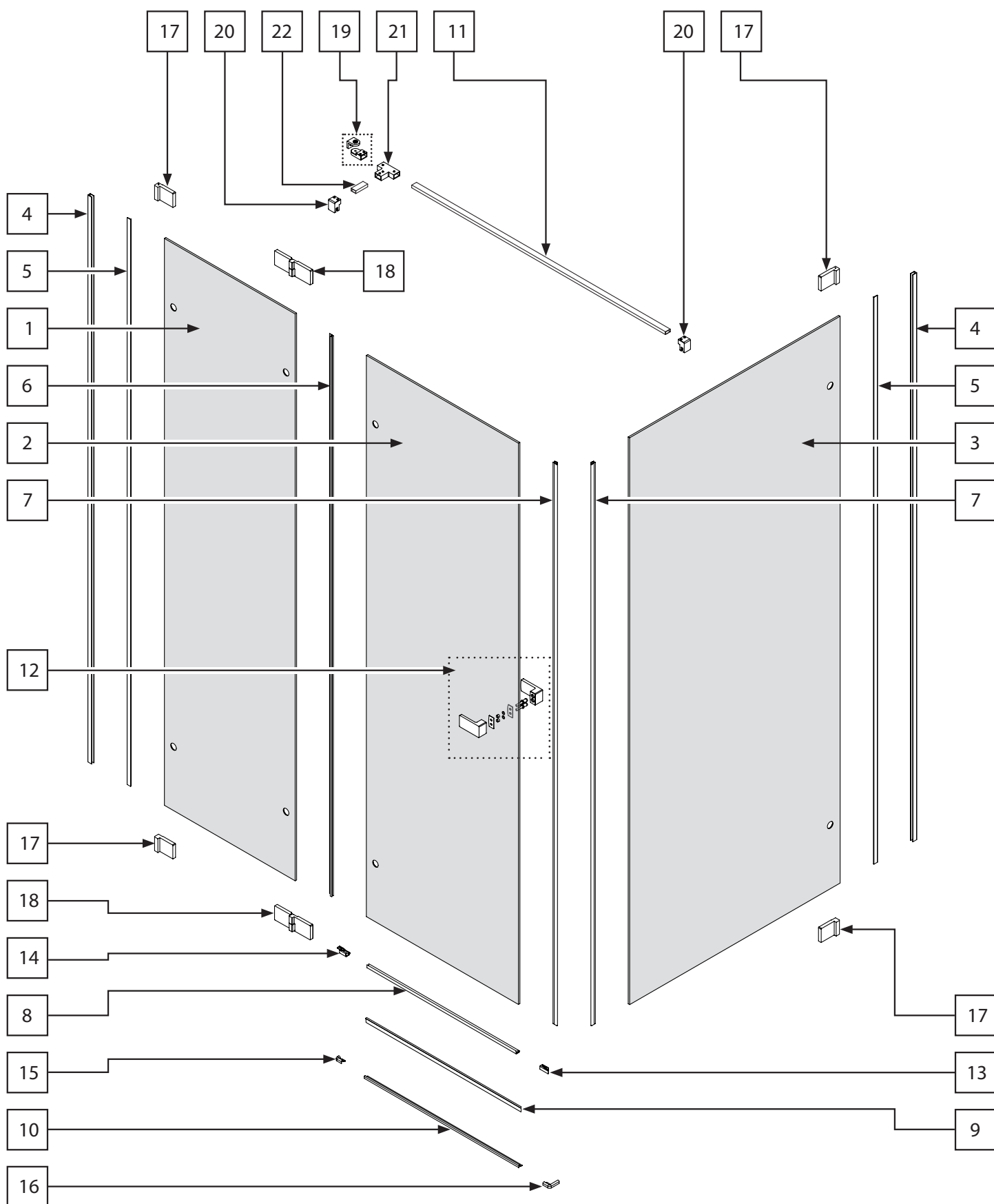
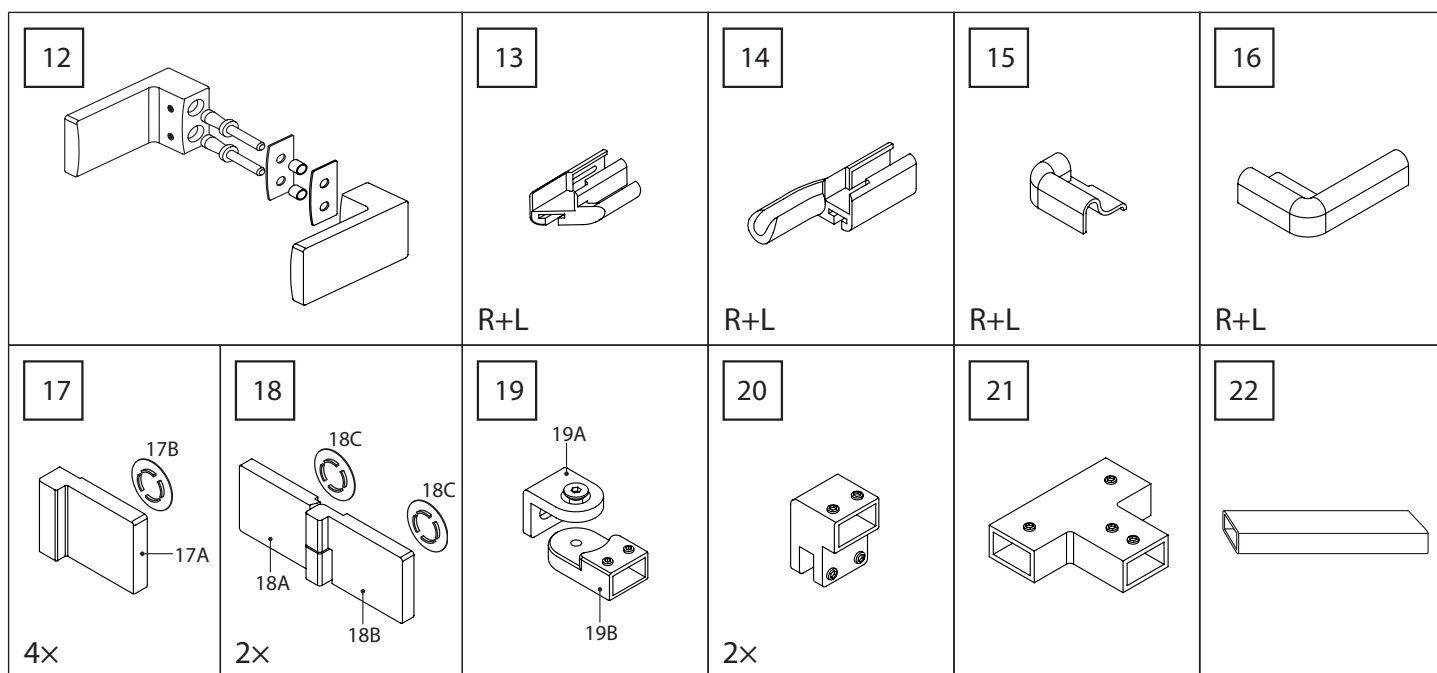
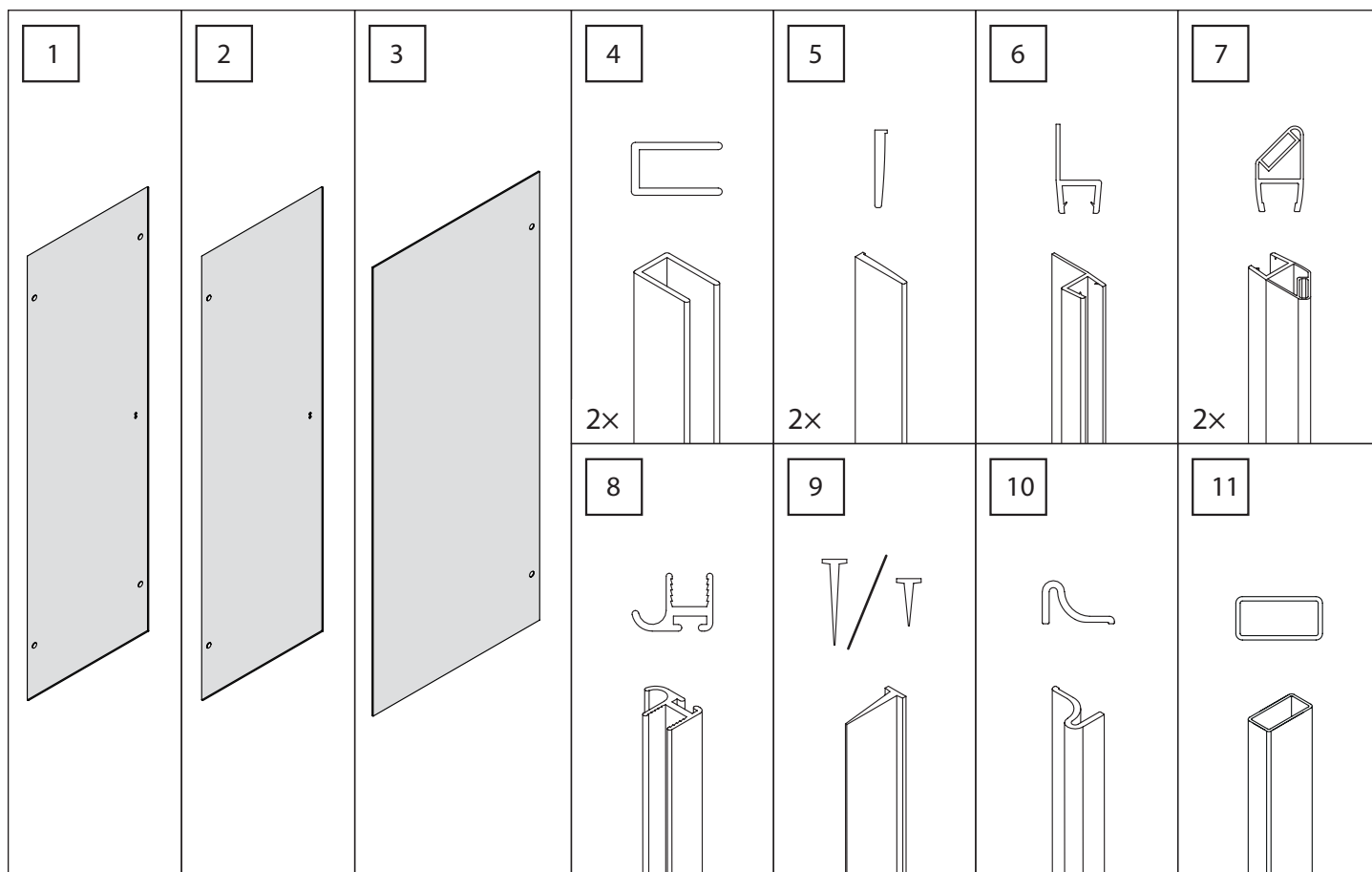
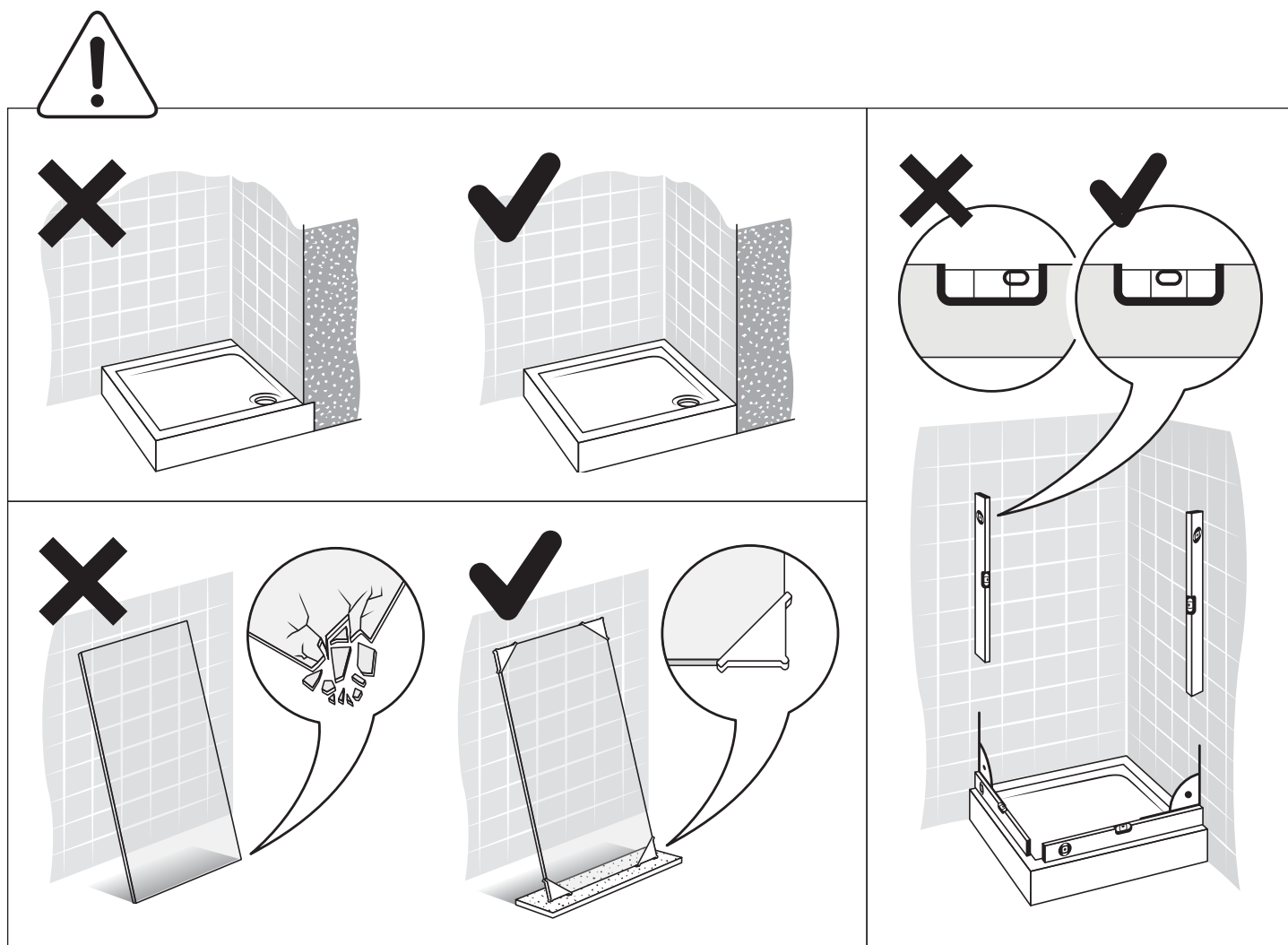
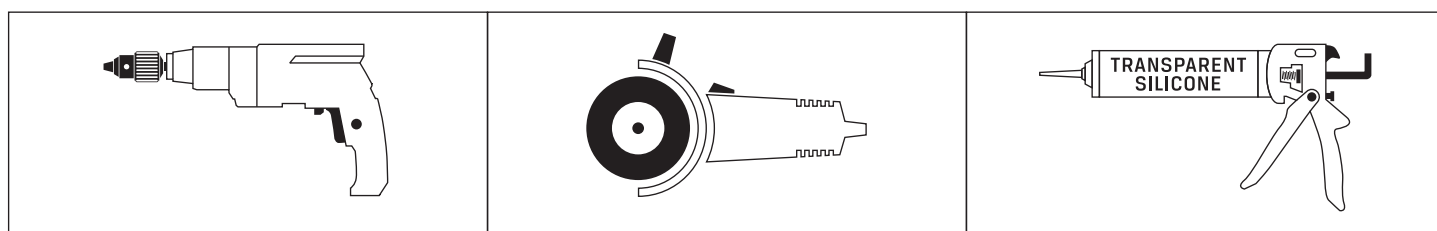
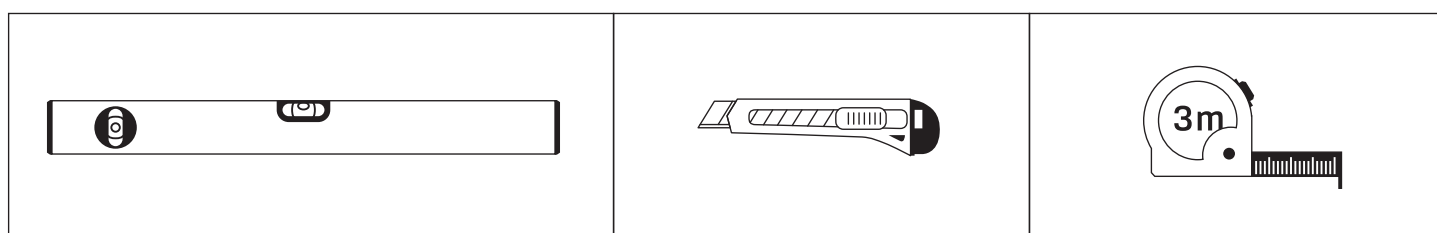
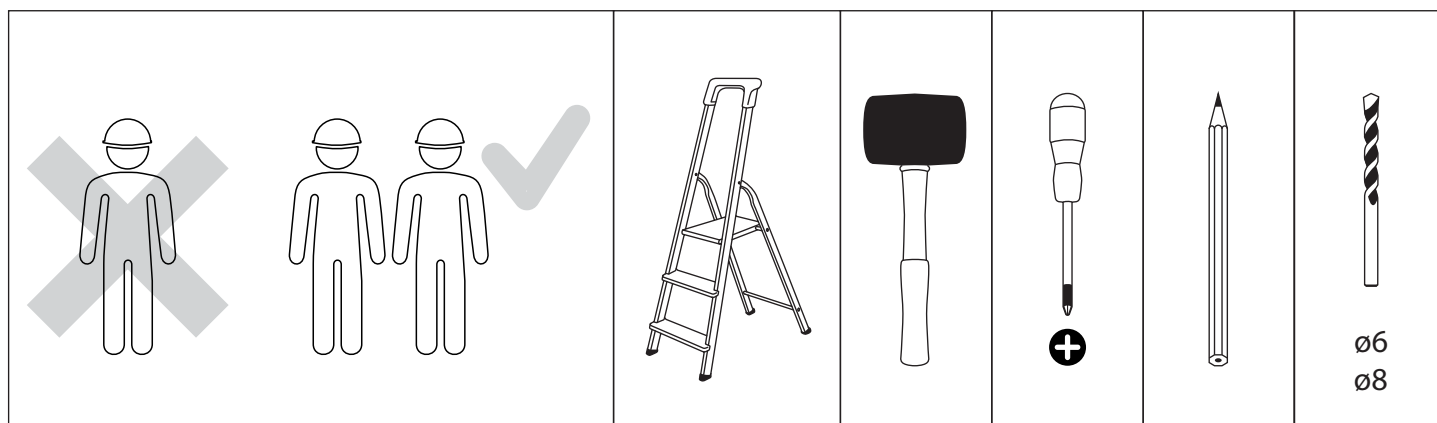


KABINA JEDNODRZWIOWA









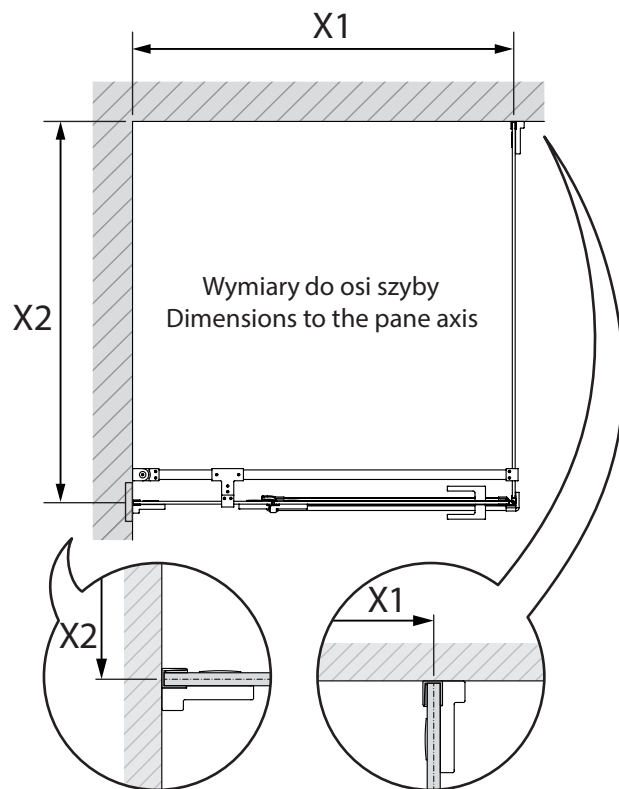
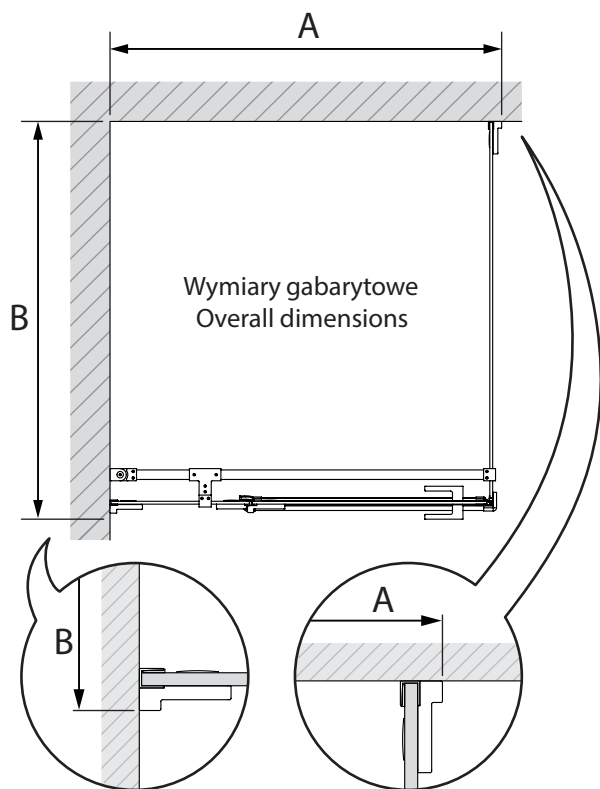


TABELA NIE DOTYCZY KABIN NA WYMIAR!

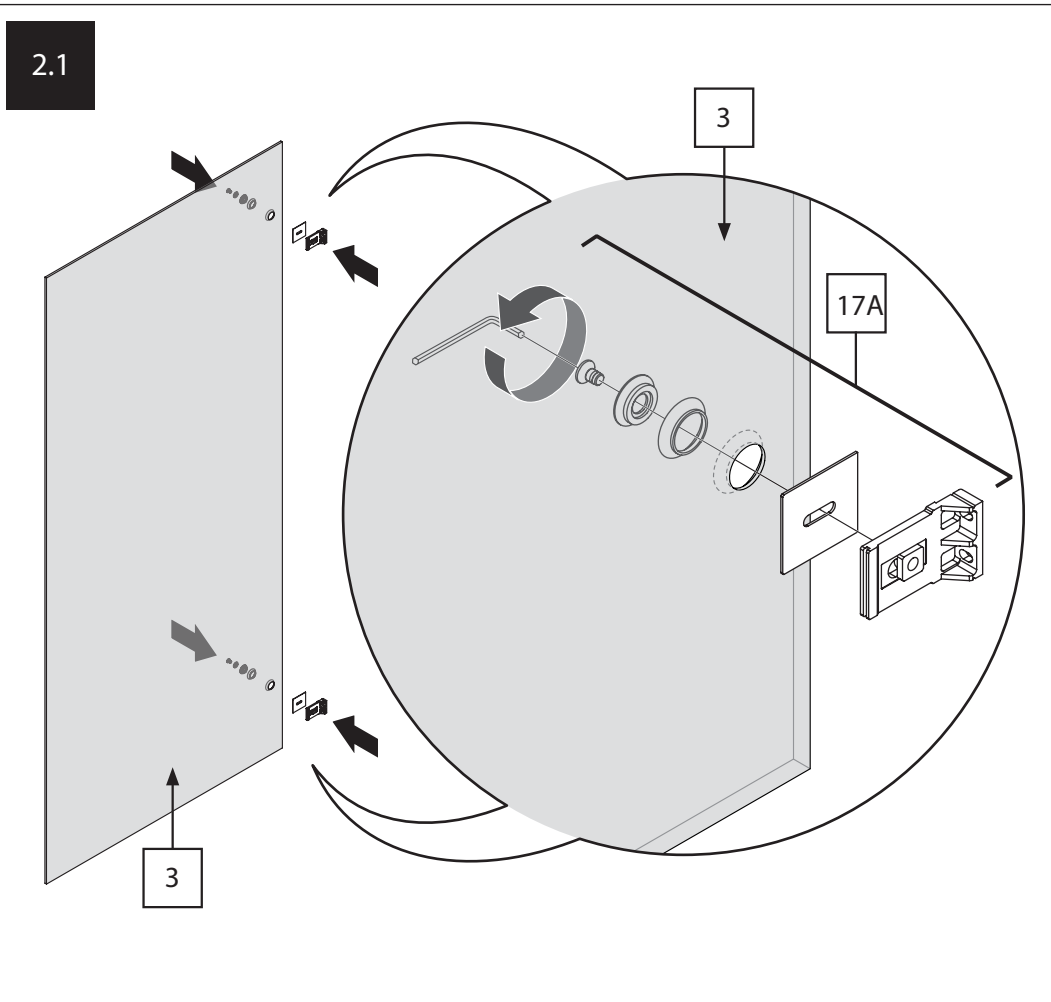
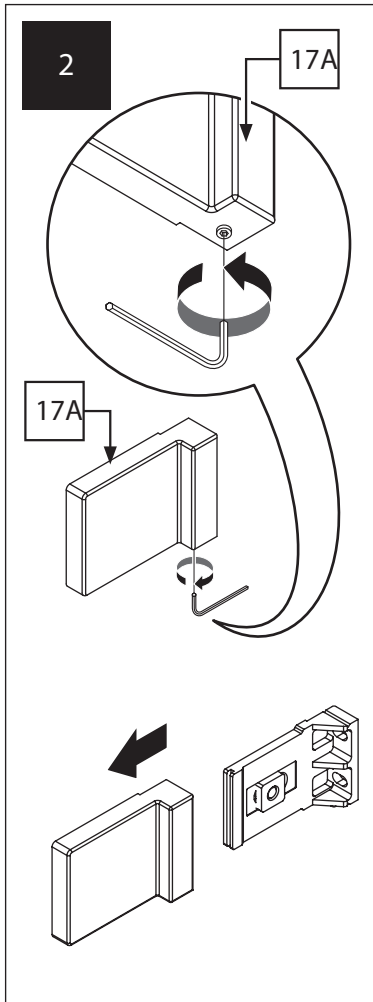
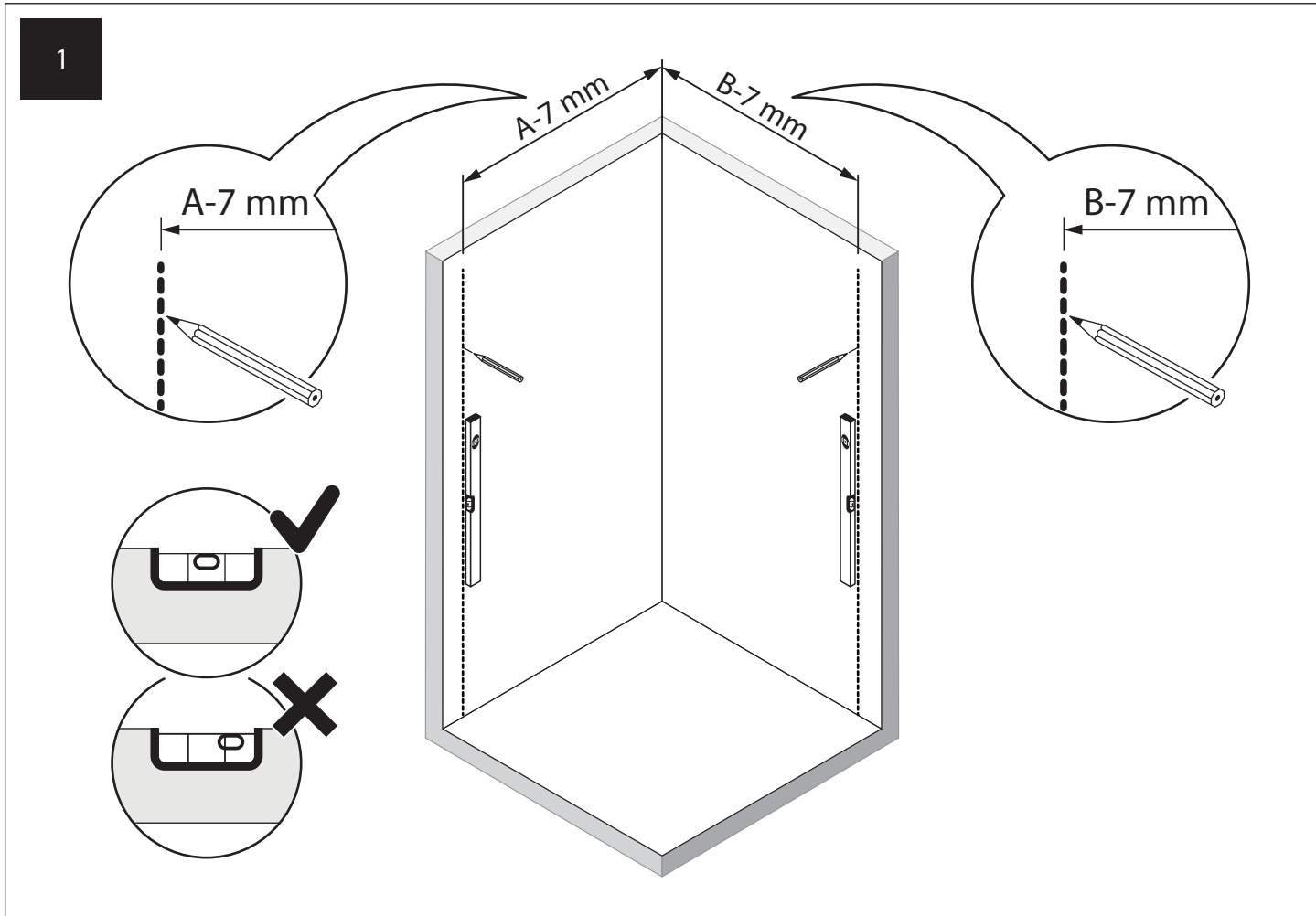
THE TABLE DOES NOT INCLUDE CUSTOM-MADE ENCLOSURES!

Specyfikacja techniczna Kabin Na Wymiar znajduje się w potwierdzeniu zamówienia.

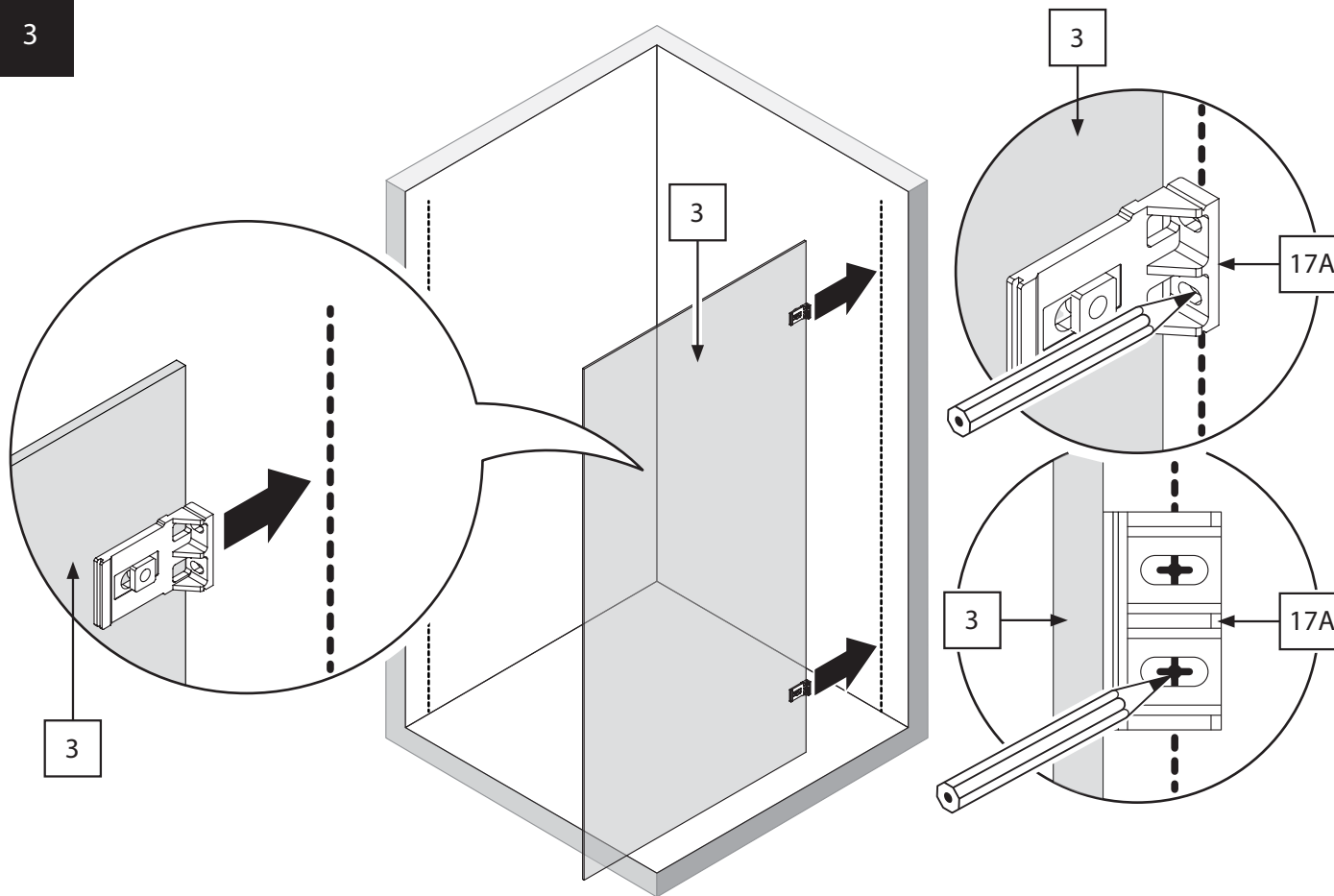
The technical specification of the Custom-Made Cabin can be found in the order confirmation.

	Wymiary gabarytowe Overall dimensions		Wymiary do osi szyby Dimensions to the pane axis	
	A	B	X1	X2
80x70x200	79,2-80,2	69,2-70,2	77-78	67-68
80x80x200	79,2-80,2	79,2-80,2	77-78	77-78
80x90x200	79,2-80,2	89,2-90,2	77-78	87-88
80x100x200	79,2-80,2	99,2-100,2	77-78	97-98
80x110x200	79,2-80,2	109,2-110,2	77-78	107-108
80x120x200	79,2-80,2	119,2-120,2	77-78	117-118
90x70x200	89,2-90,2	69,2-70,2	87-88	67-68
90x80x200	89,2-90,2	79,2-80,2	87-88	77-78
90x90x200	89,2-90,2	89,2-90,2	87-88	87-88
90x100x200	89,2-90,2	99,2-100,2	87-88	97-98
90x110x200	89,2-90,2	109,2-110,2	87-88	107-108
90x120x200	89,2-90,2	119,2-120,2	87-88	117-118
100x70x200	99,2-100,2	69,2-70,2	97-98	67-68
100x80x200	99,2-100,2	79,2-80,2	97-98	77-78
100x90x200	99,2-100,2	89,2-90,2	97-98	87-88

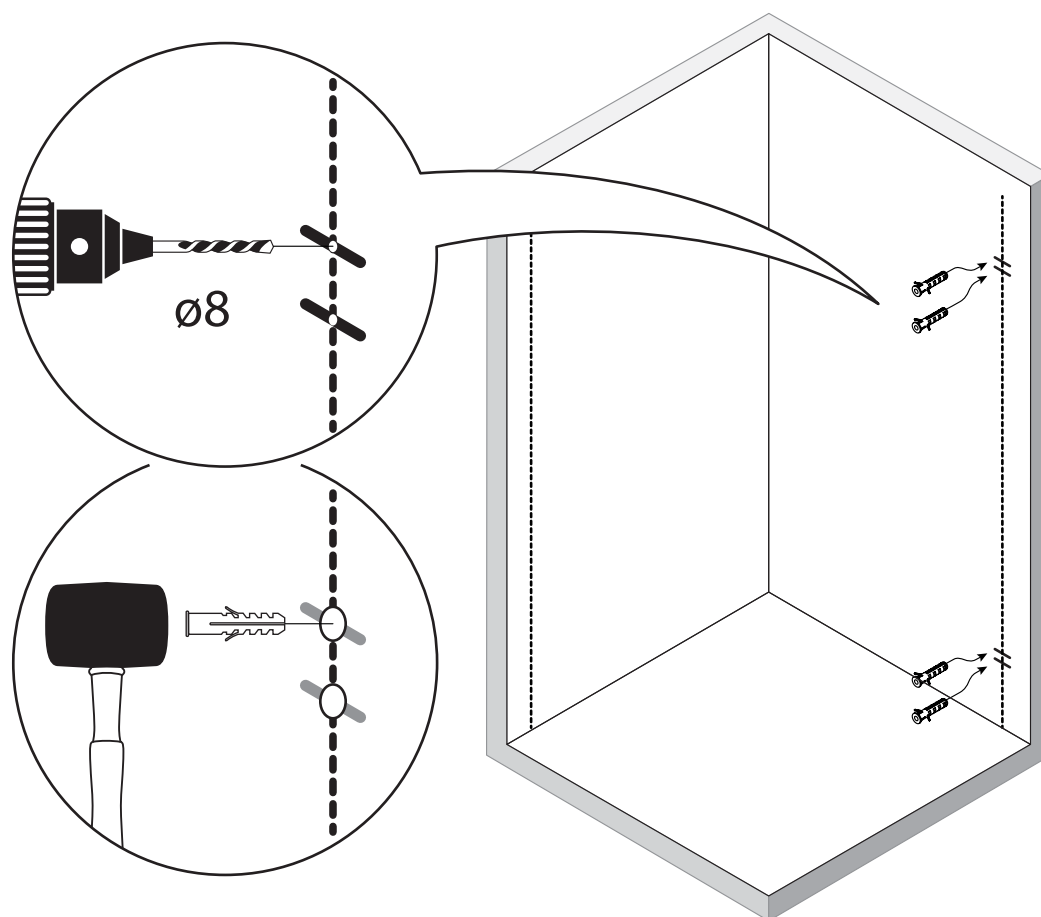
	Wymiary gabarytowe Overall dimensions		Wymiary do osi szyby Dimensions to the pane axis	
	A	B	X1	X2
100x100x200	99,2-100,2	99,2-100,2	97-98	97-98
100x110x200	99,2-100,2	109,2-110,2	97-98	107-108
100x120x200	99,2-100,2	119,2-120,2	97-98	117-118
110x70x200	109,2-110,2	69,2-70,2	107-108	67-68
110x80x200	109,2-110,2	79,2-80,2	107-108	77-78
110x90x200	109,2-110,2	89,2-90,2	107-108	87-88
110x100x200	109,2-110,2	99,2-100,2	107-108	97-98
110x110x200	109,2-110,2	109,2-110,2	107-108	107-108
110x120x200	109,2-110,2	119,2-120,2	107-108	117-118
120x70x200	119,2-120,2	69,2-70,2	117-118	67-68
120x80x200	119,2-120,2	79,2-80,2	117-118	77-78
120x90x200	119,2-120,2	89,2-90,2	117-118	87-88
120x100x200	119,2-120,2	99,2-100,2	117-118	97-98
120x110x200	119,2-120,2	109,2-110,2	117-118	107-108
120x120x200	119,2-120,2	119,2-120,2	117-118	117-118



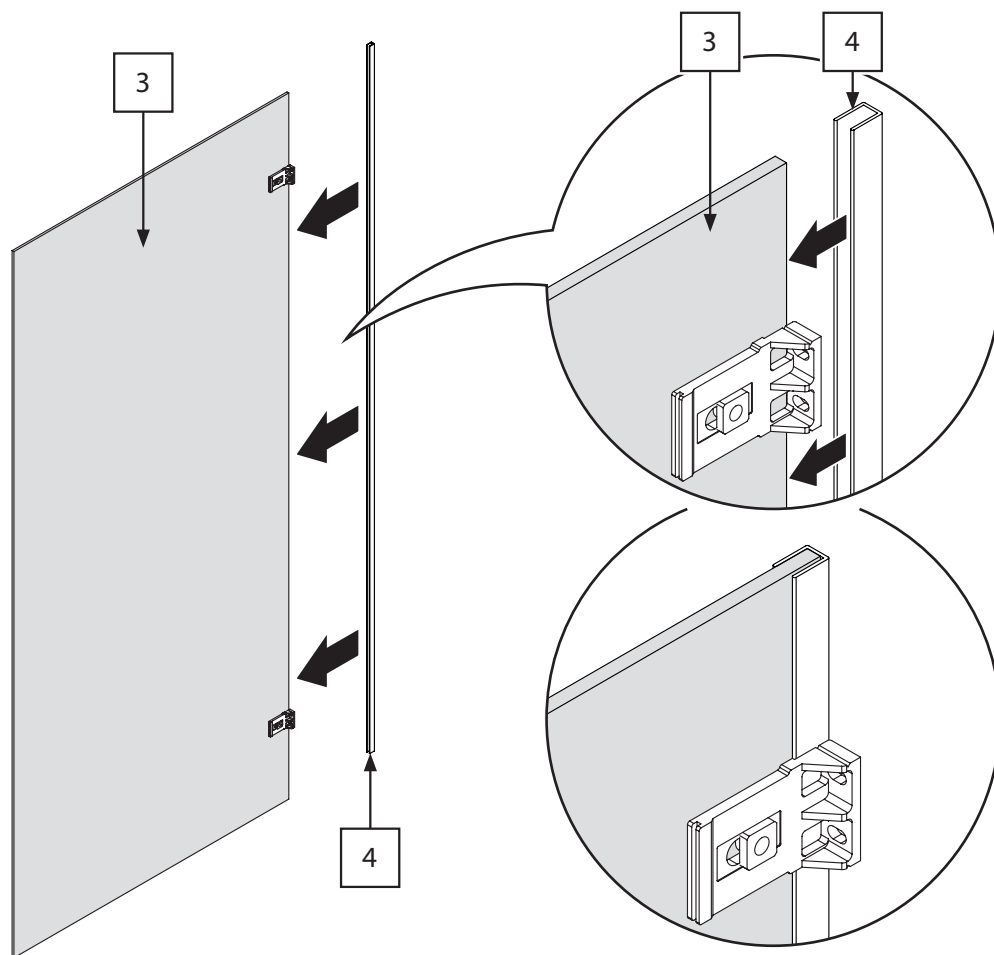
3



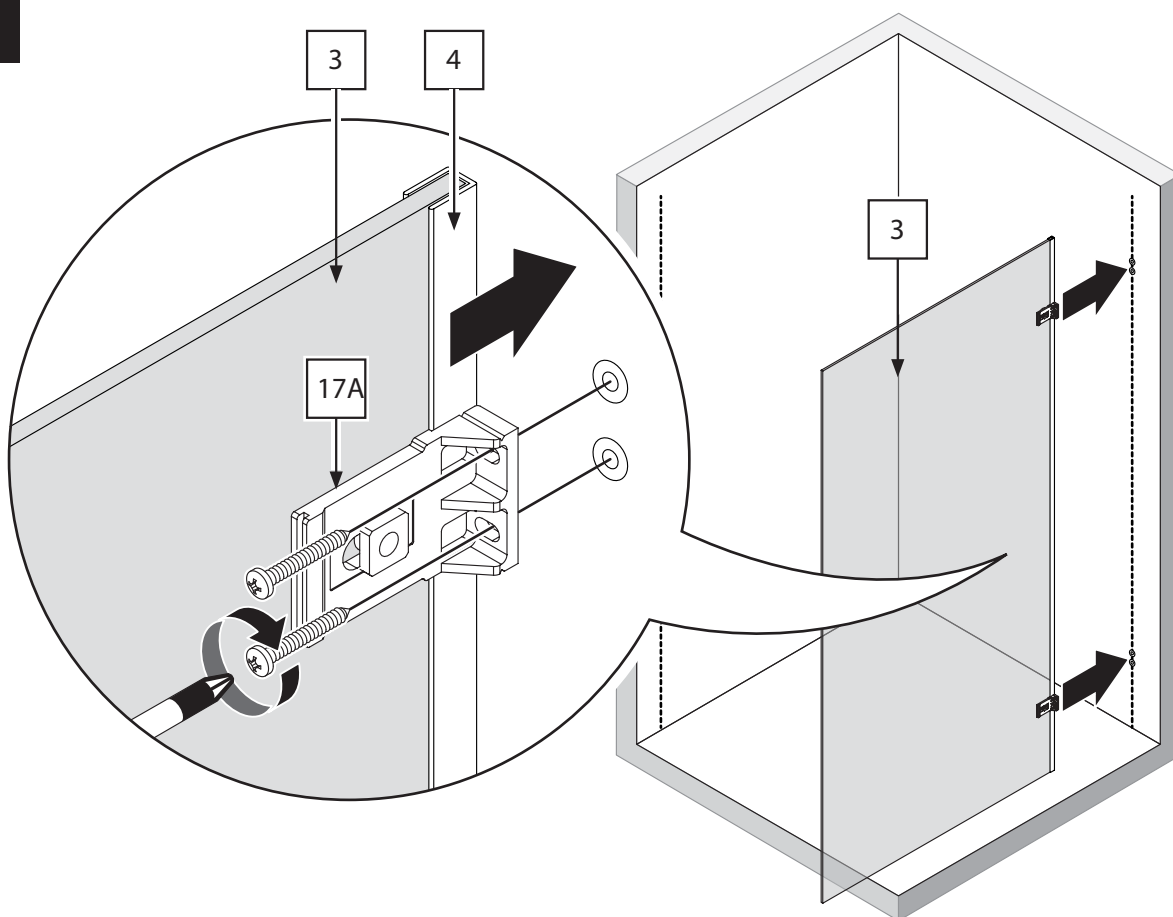
3.1

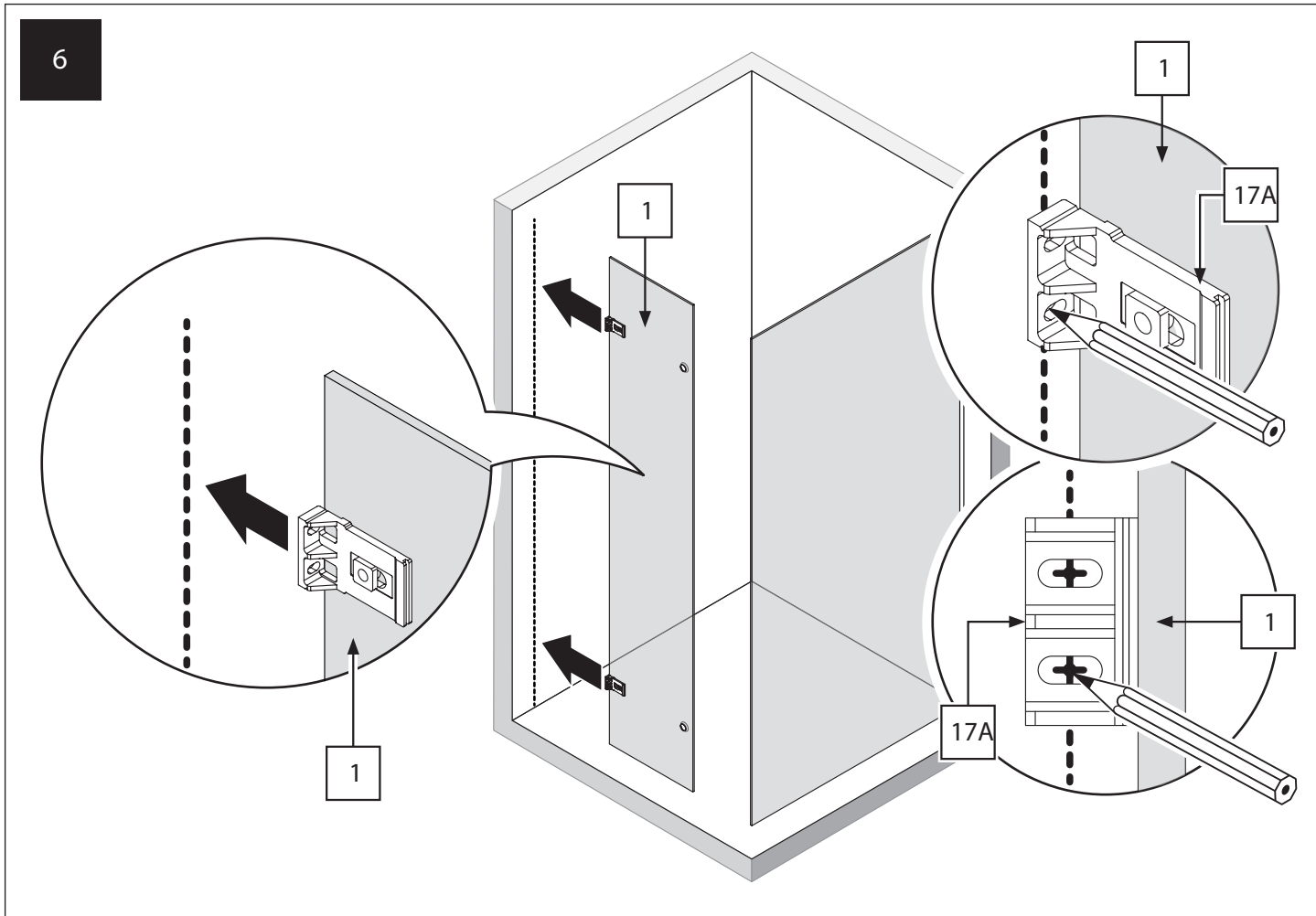
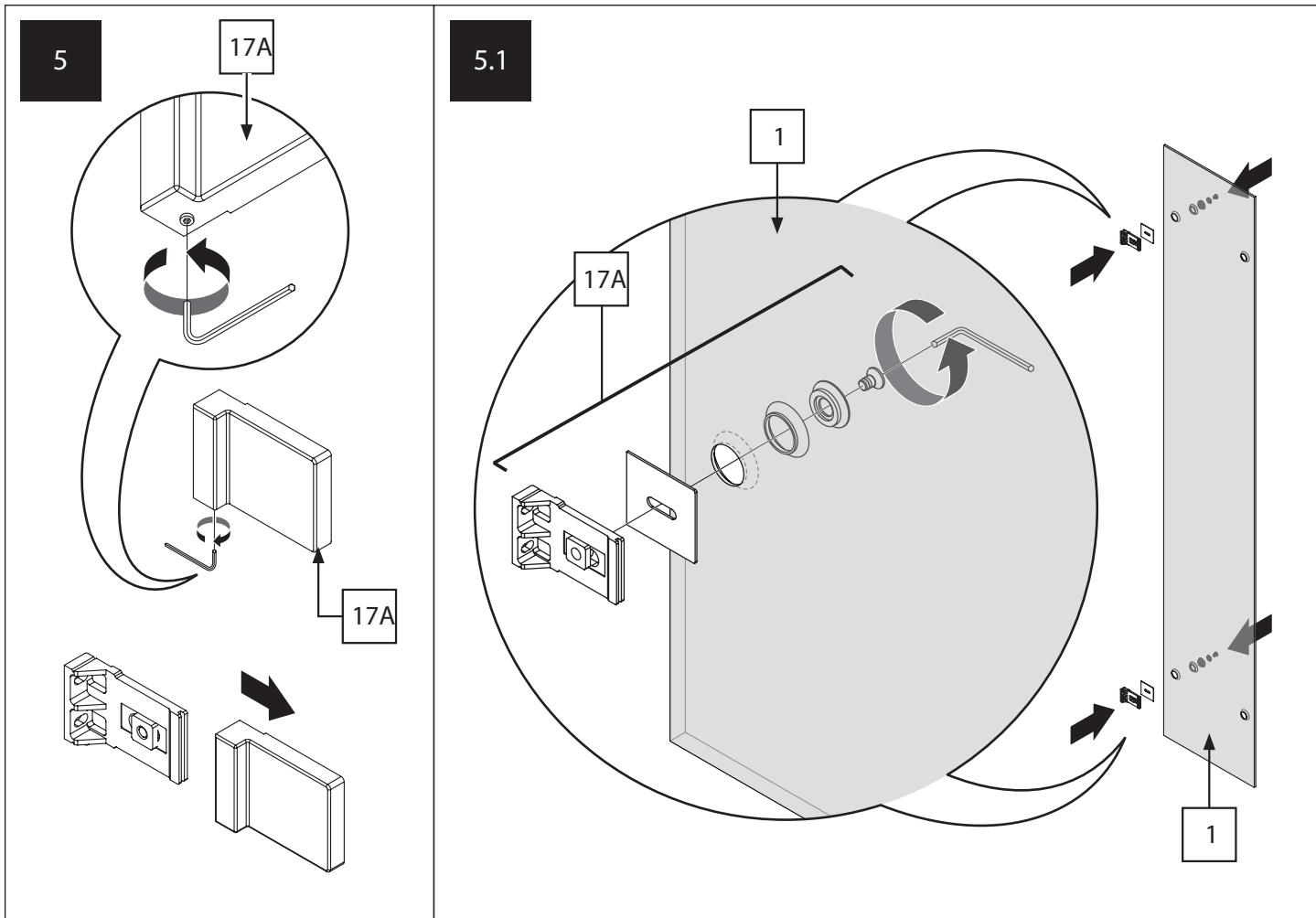


4

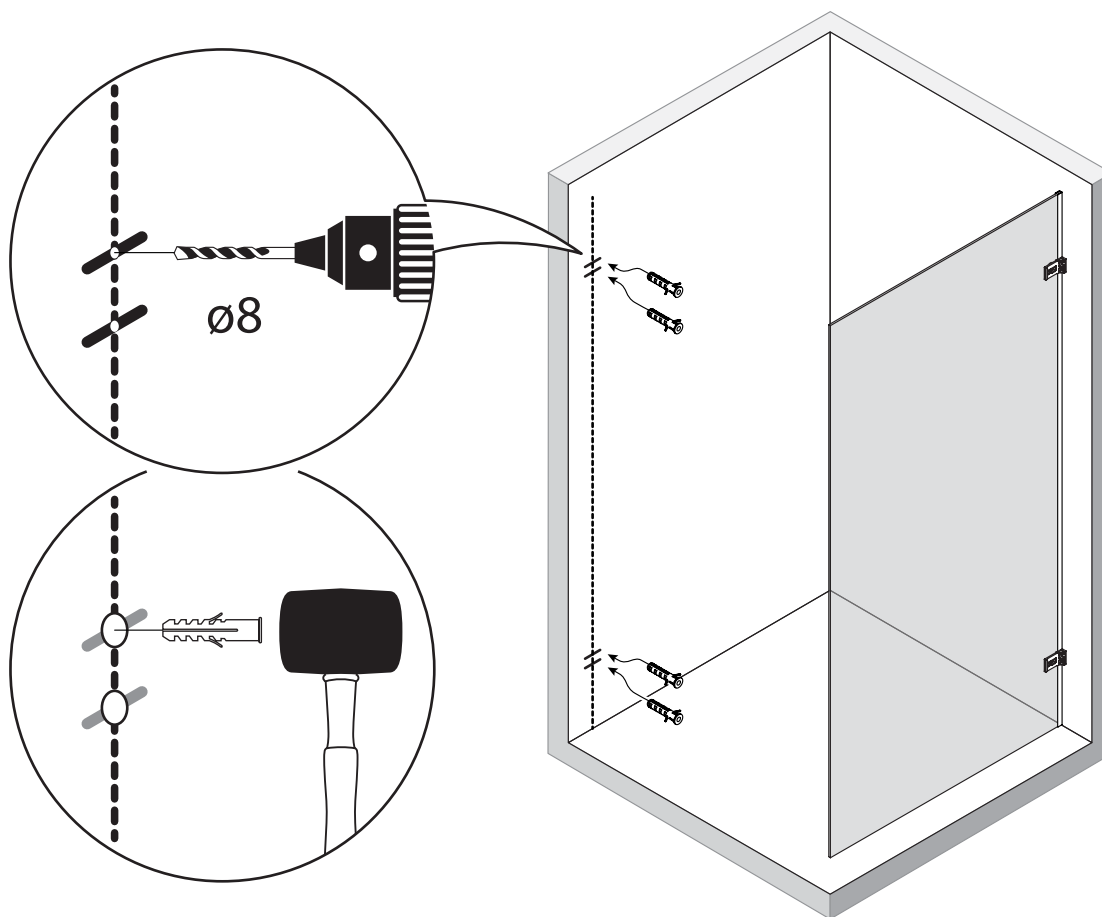


4.1

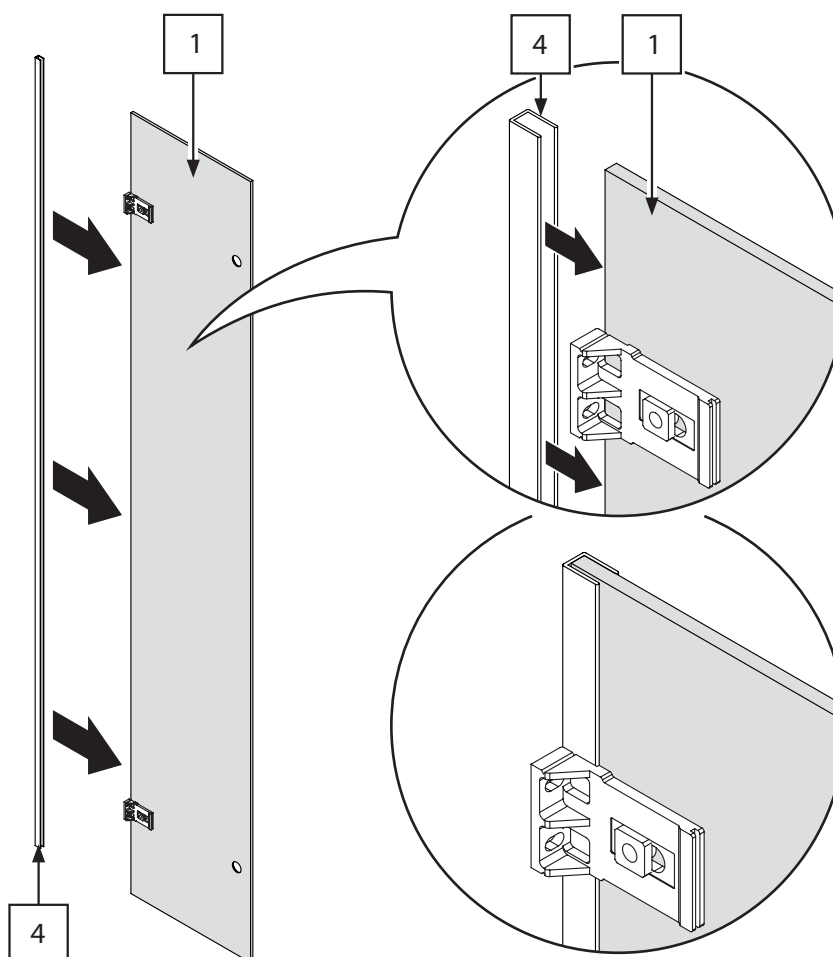




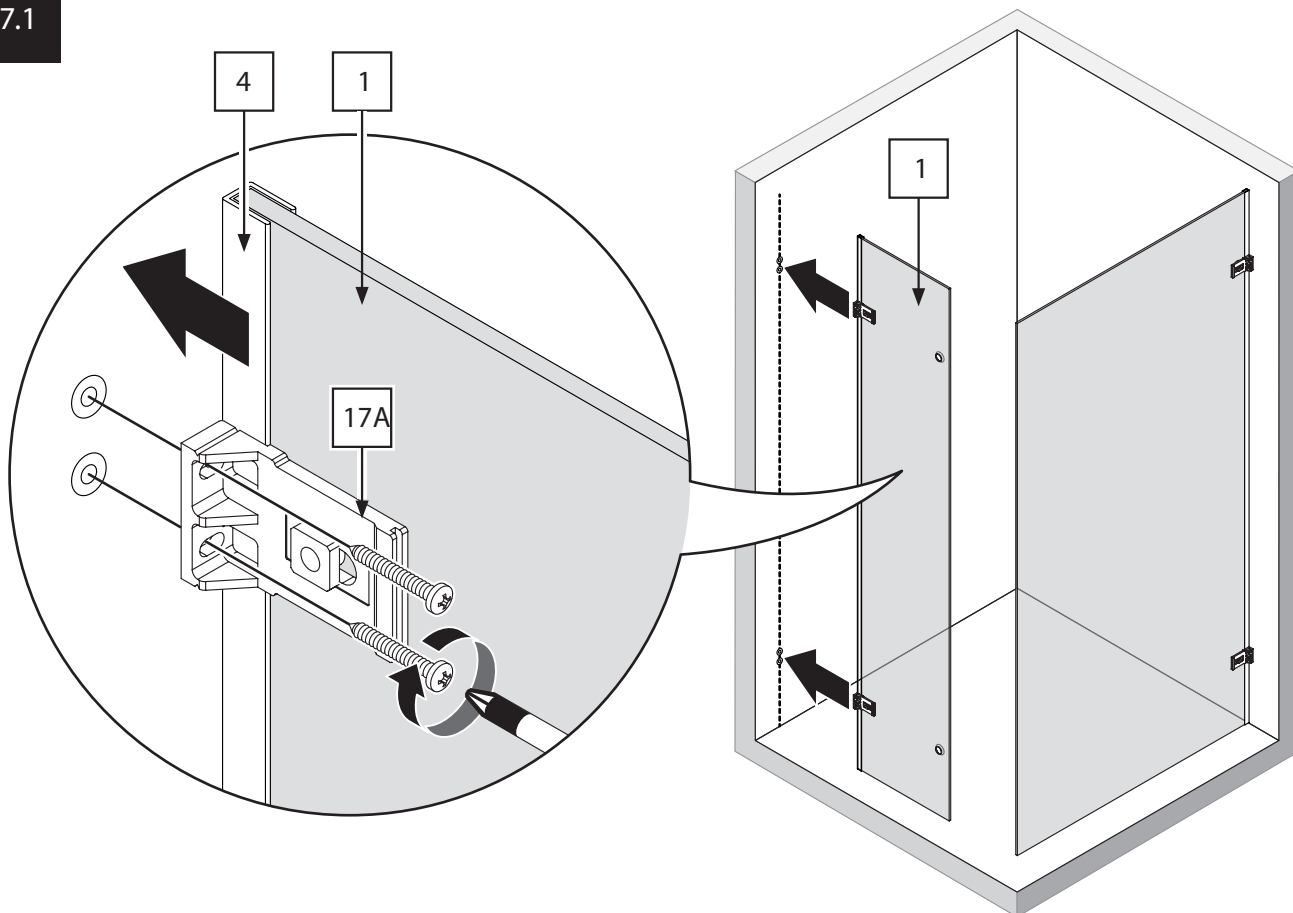
6.1



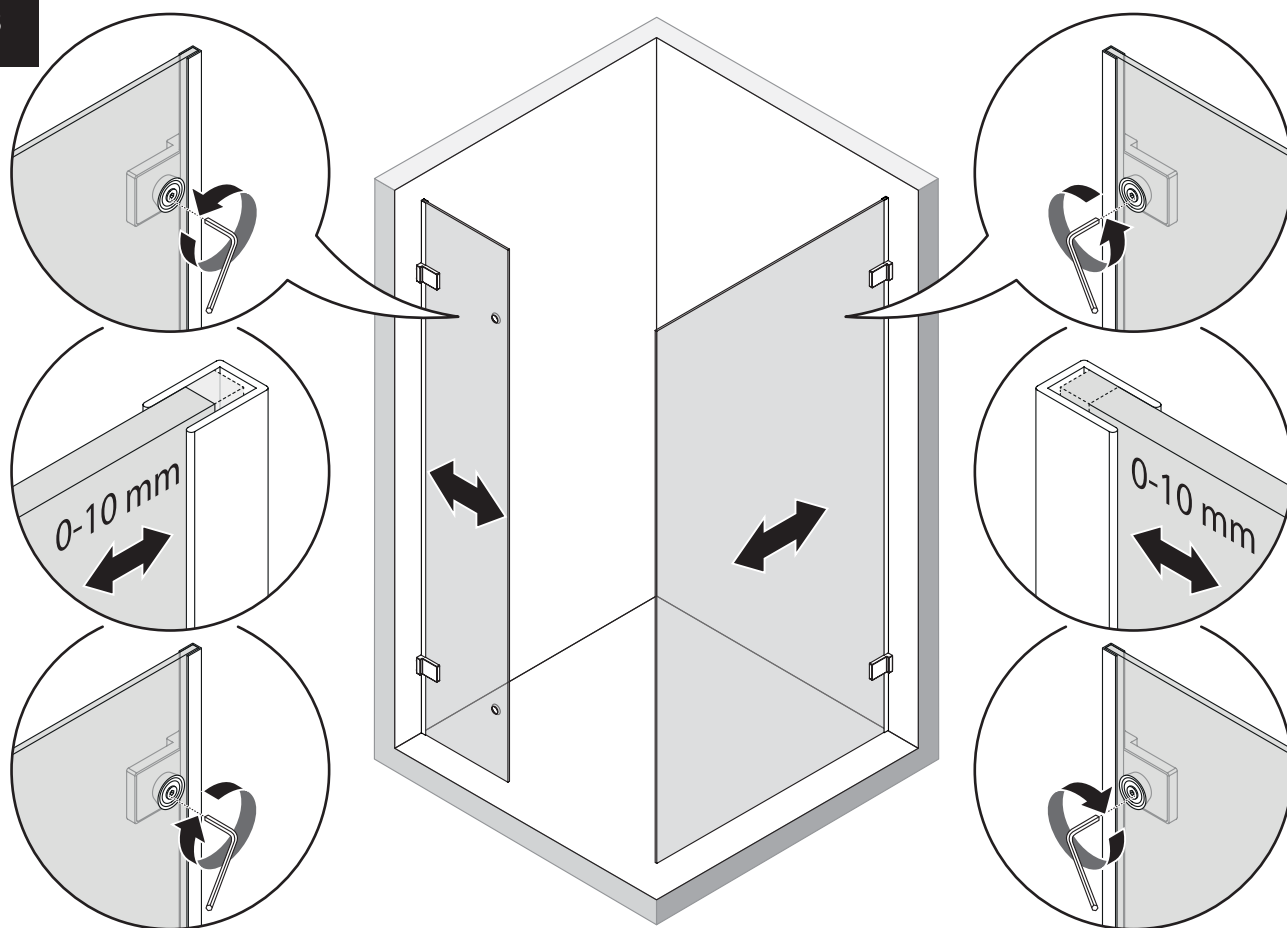
7



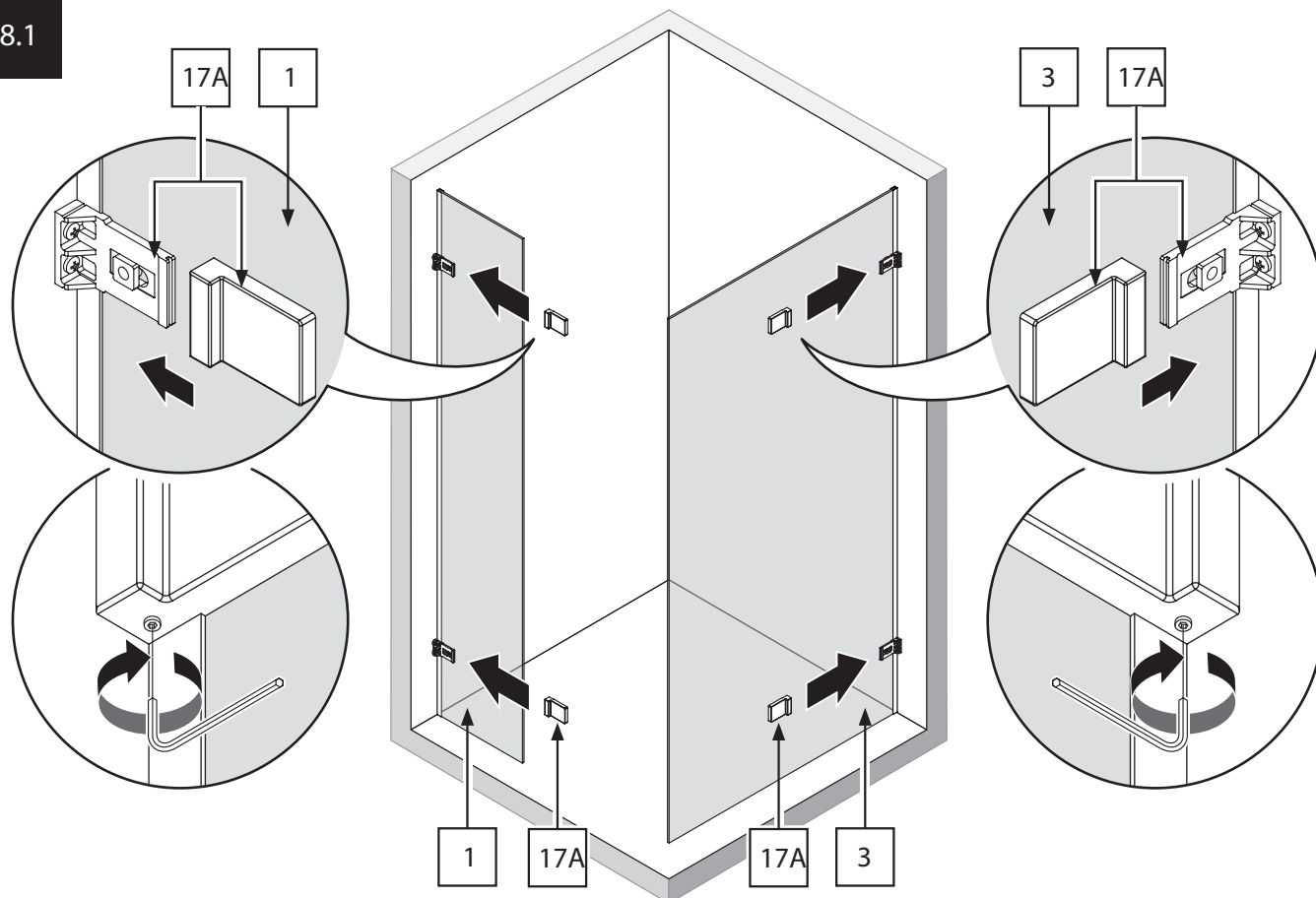
7.1



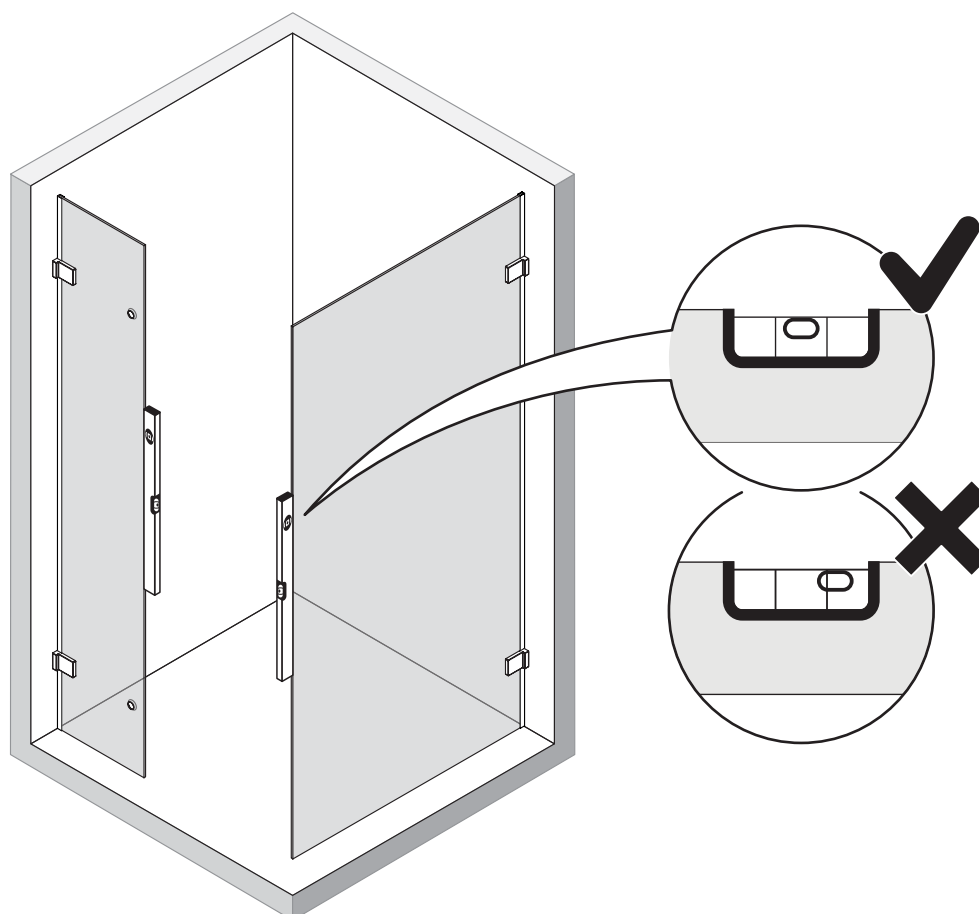
8



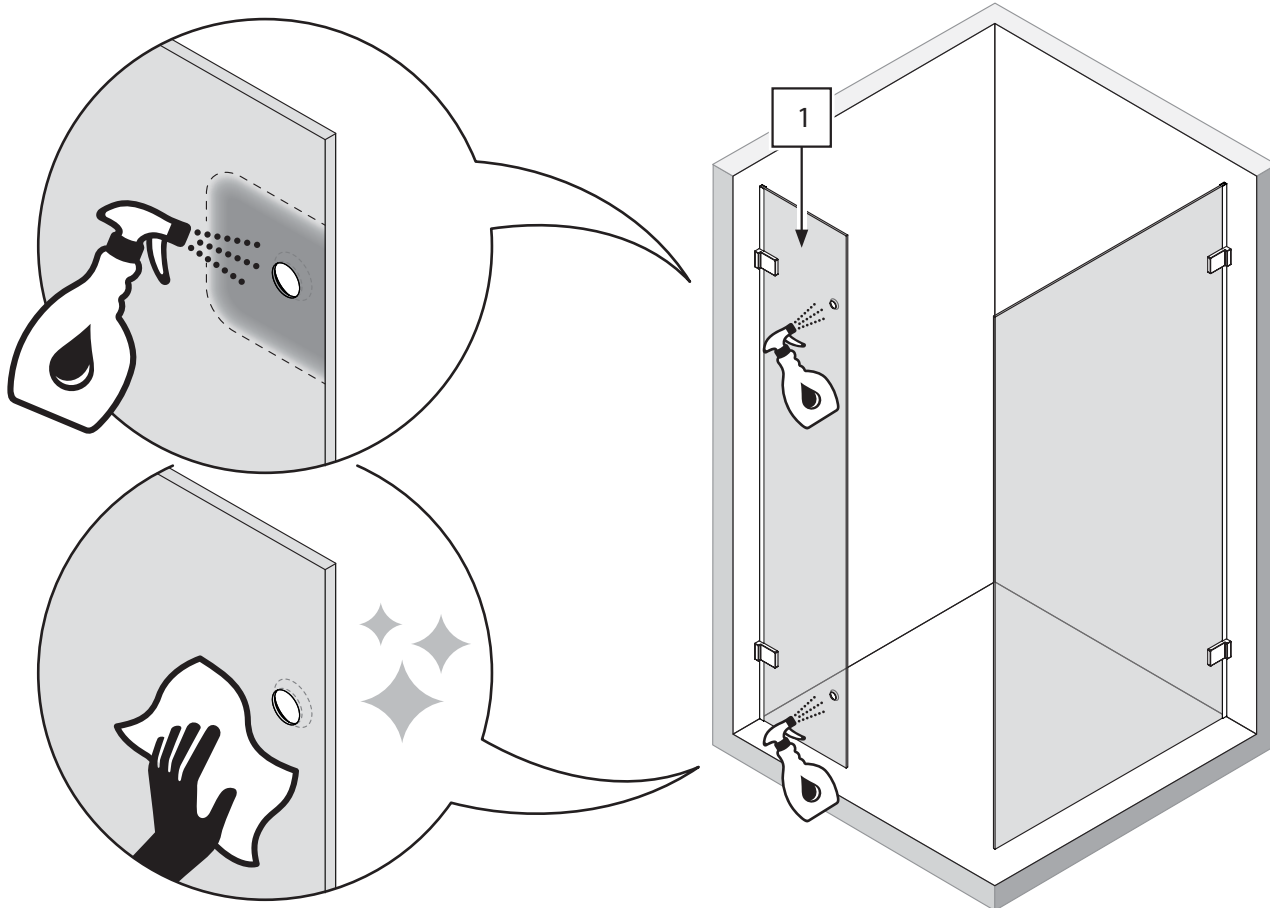
8.1



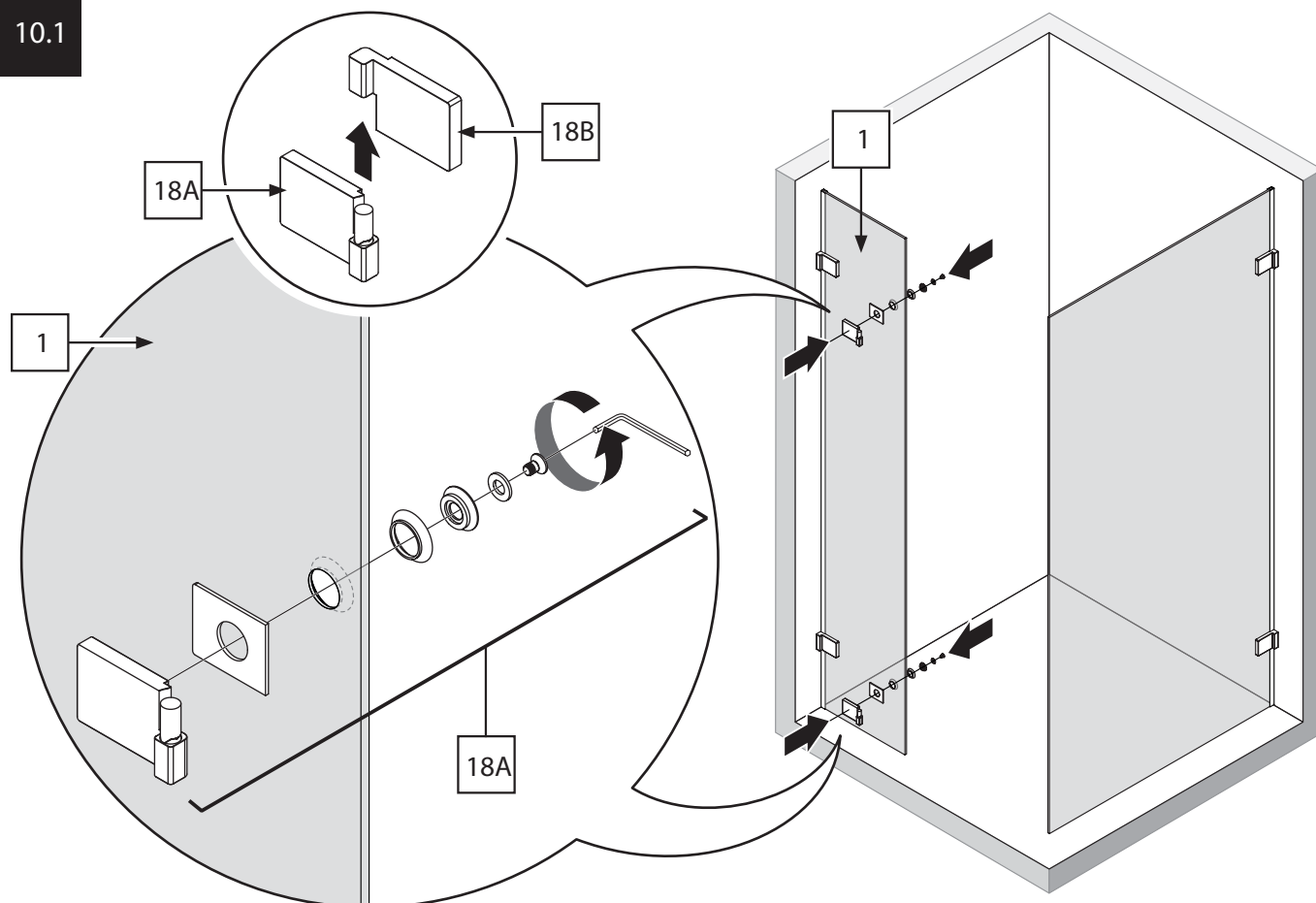
9



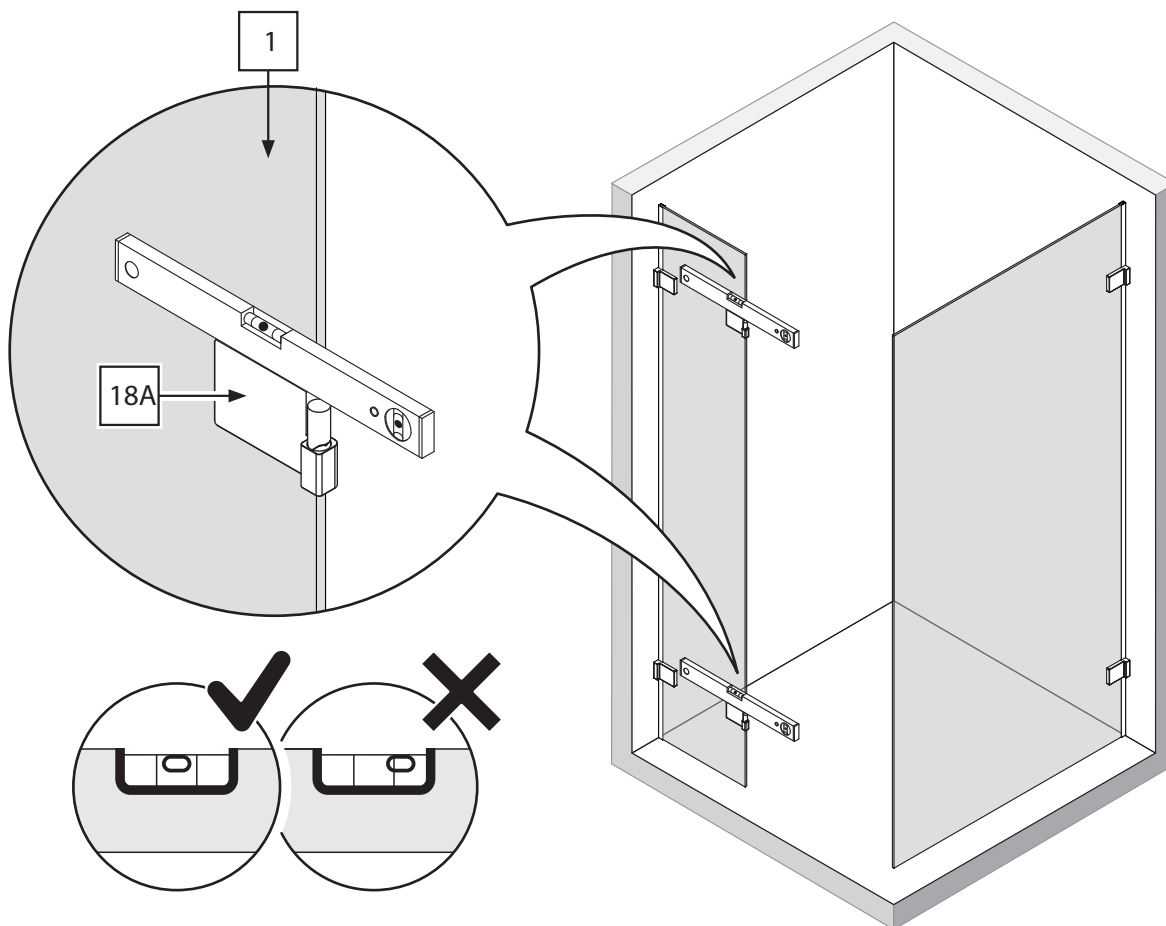
10



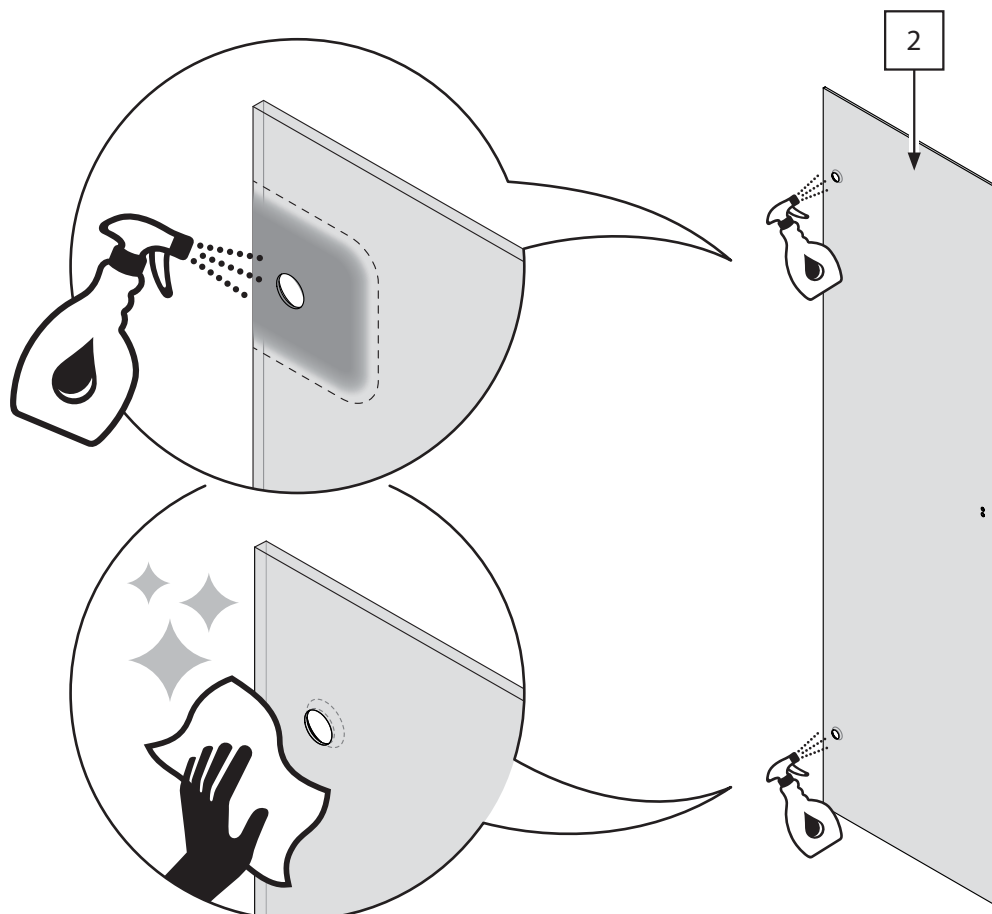
10.1



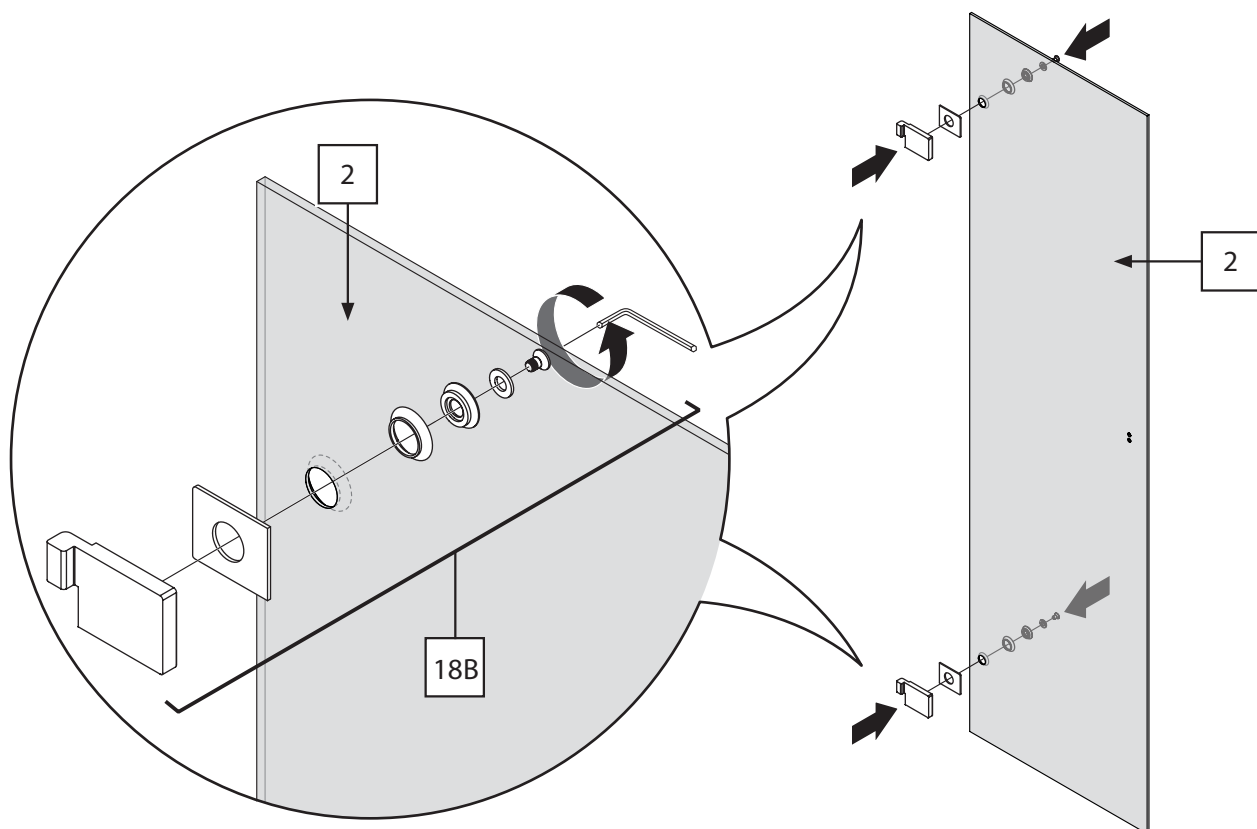
10.2



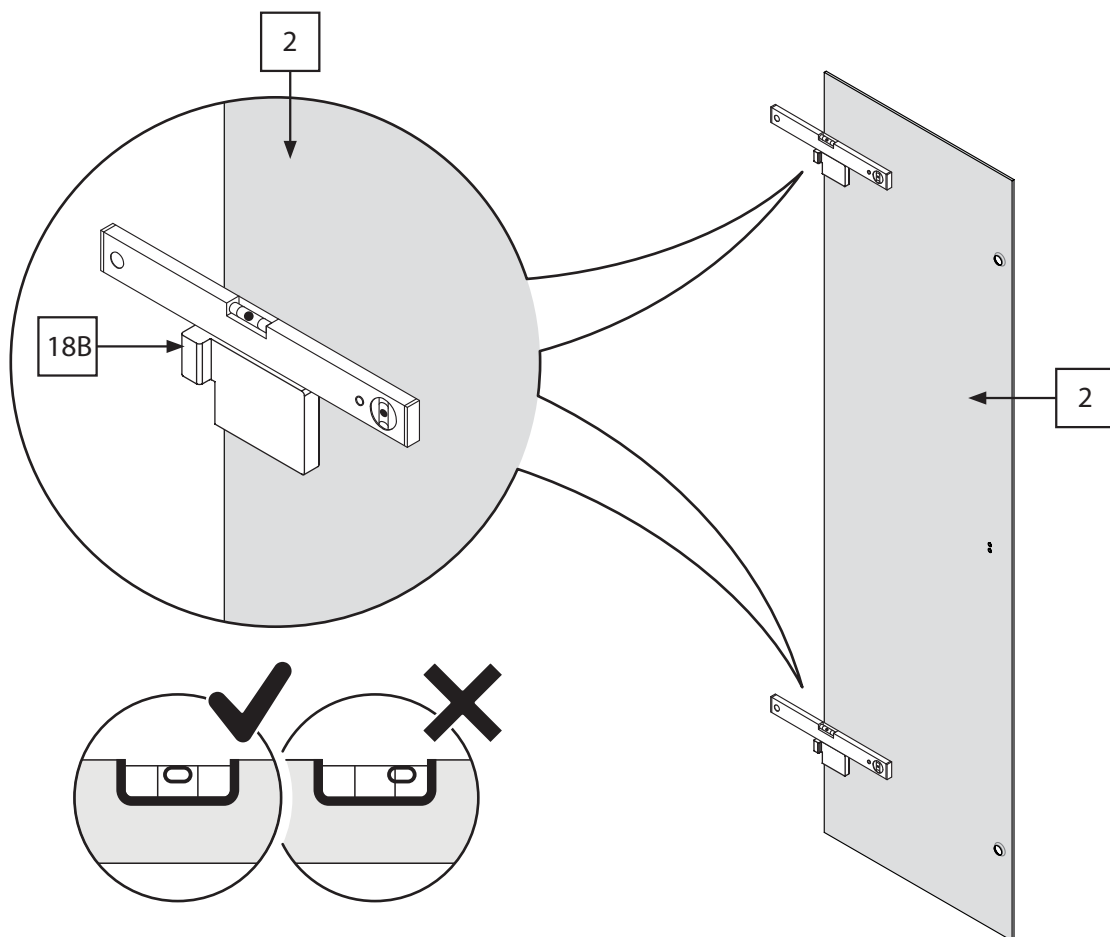
11



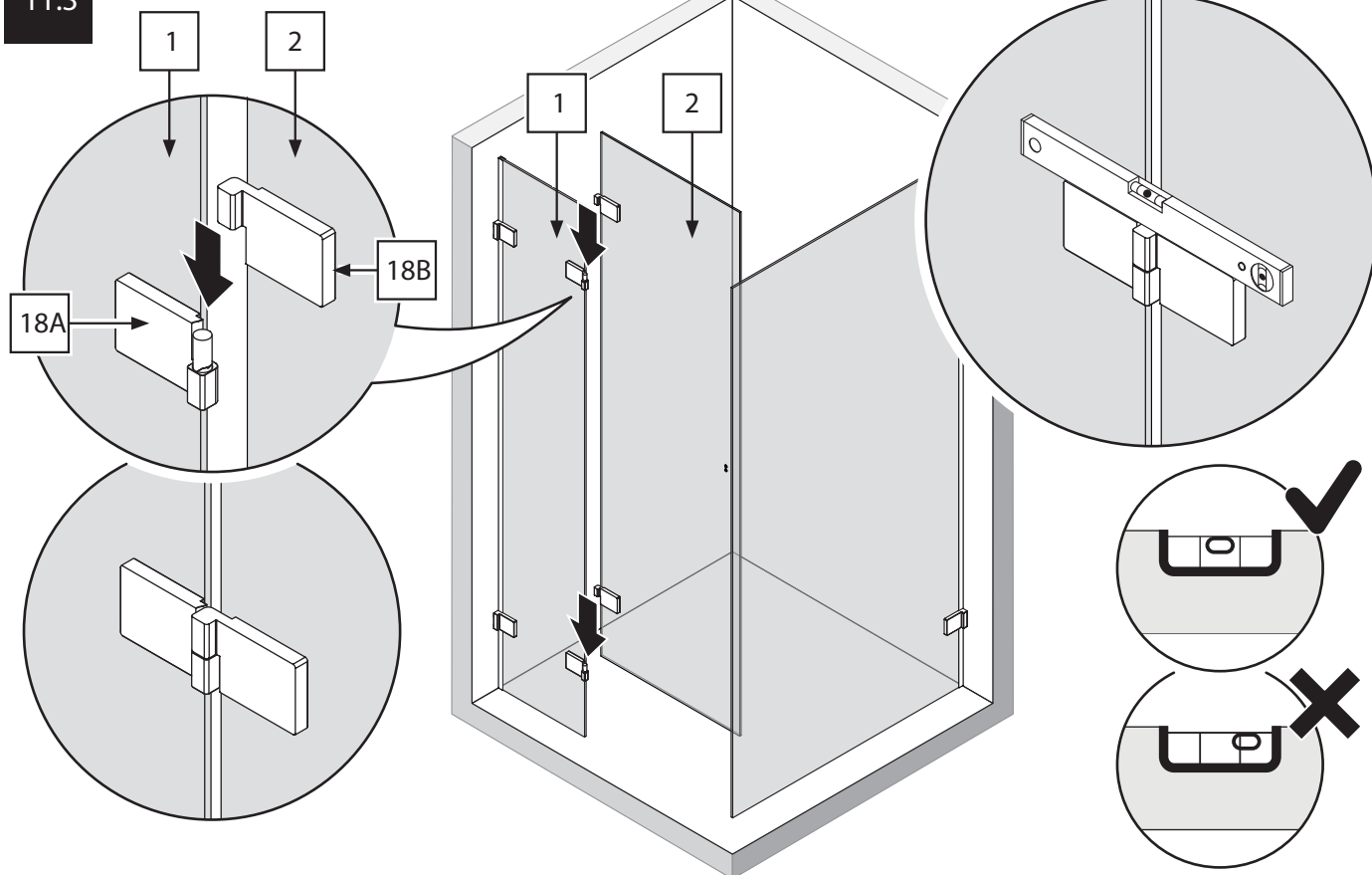
11.1



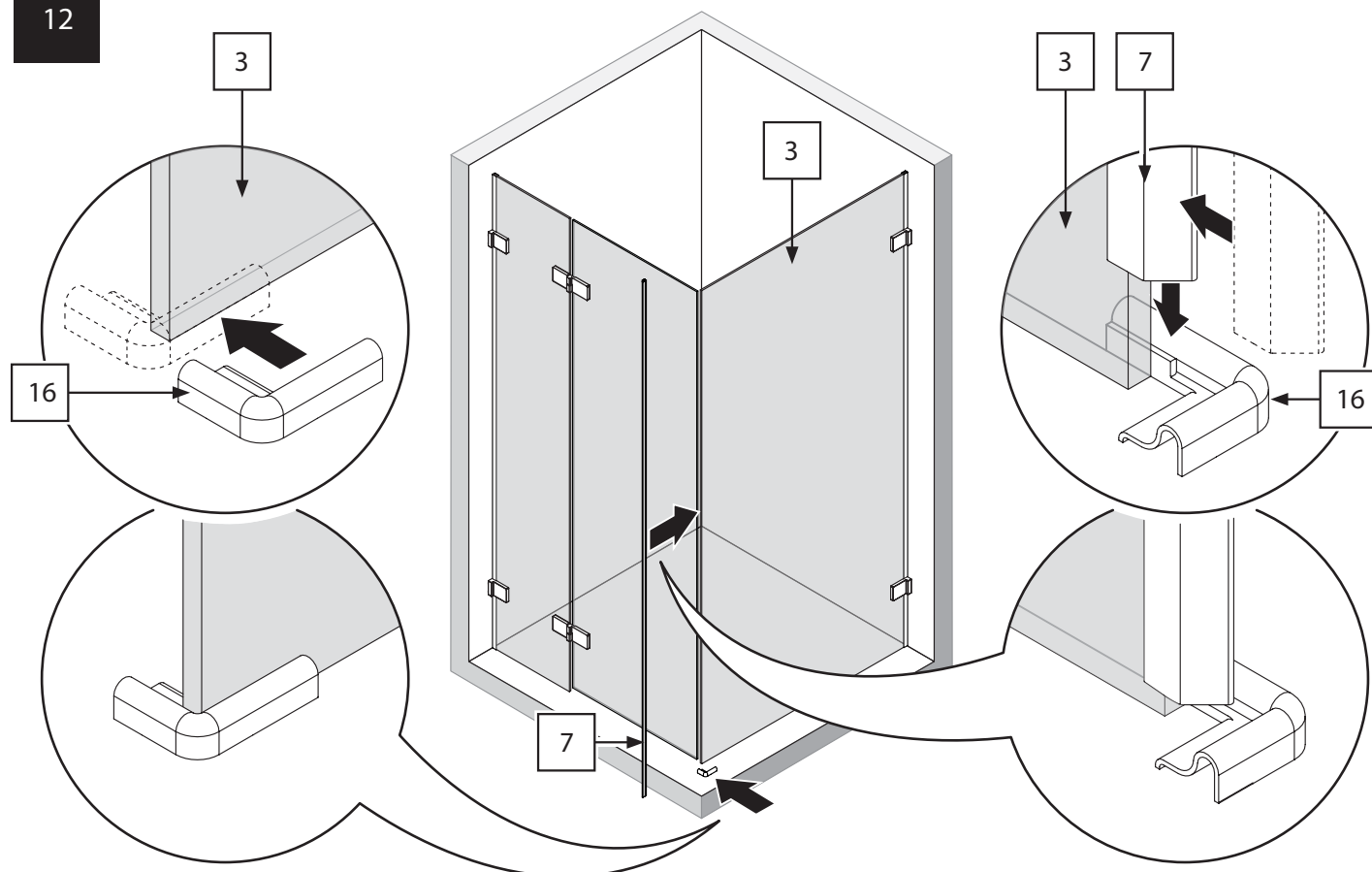
11.2



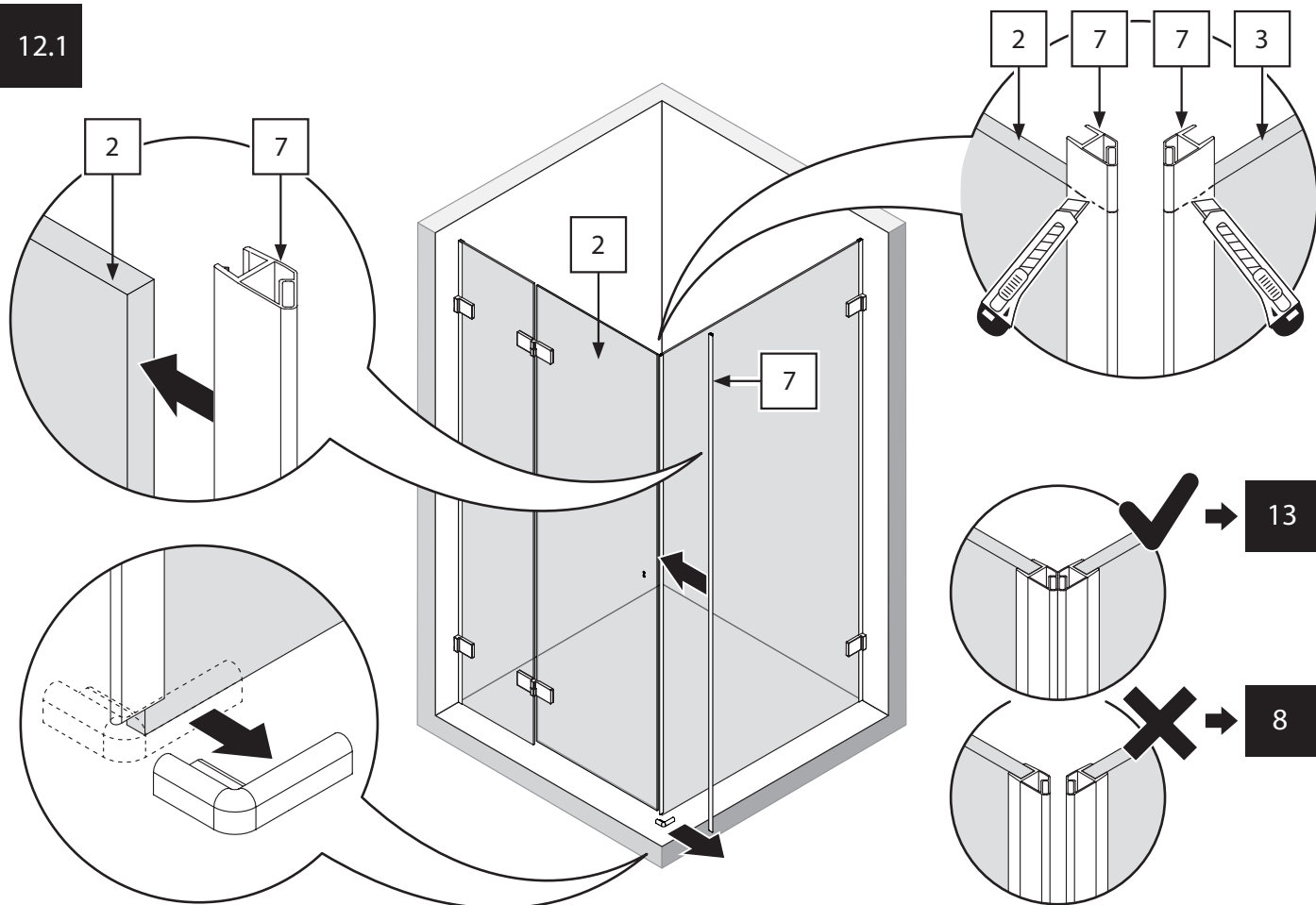
11.3



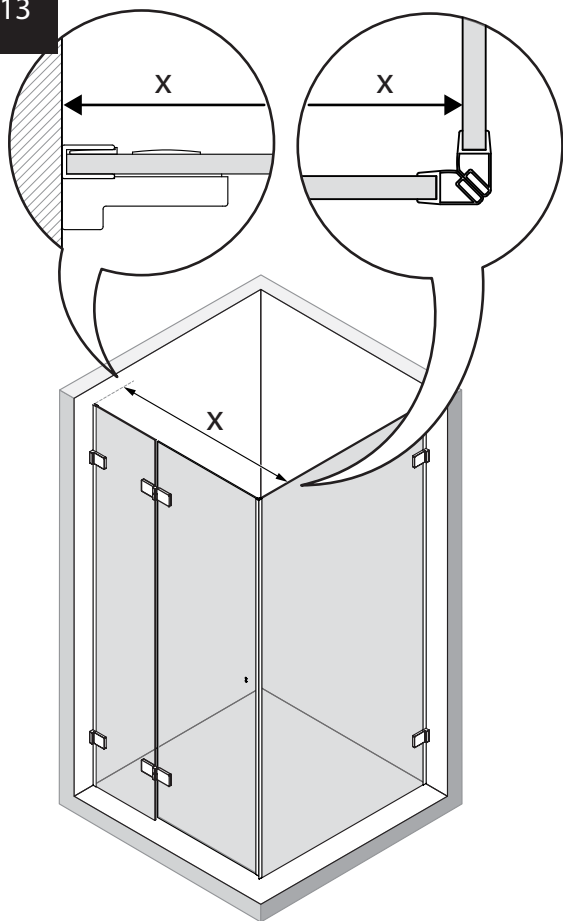
12



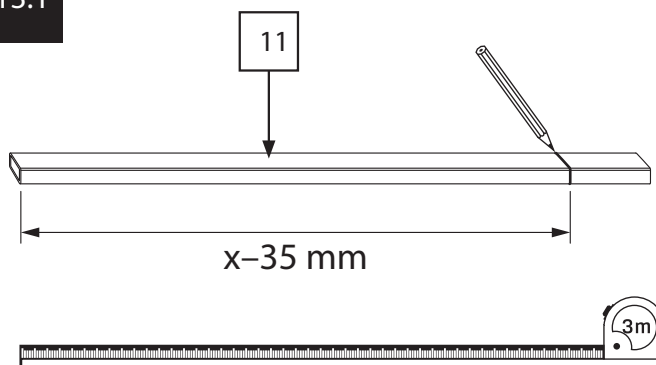
12.1



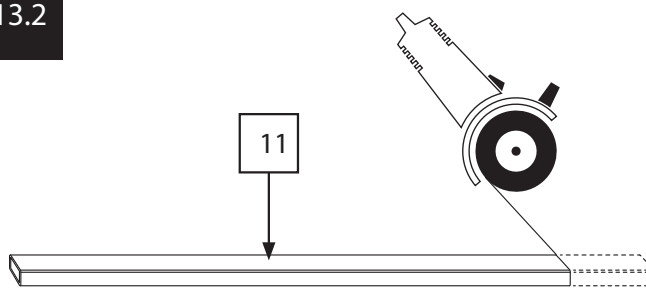
13



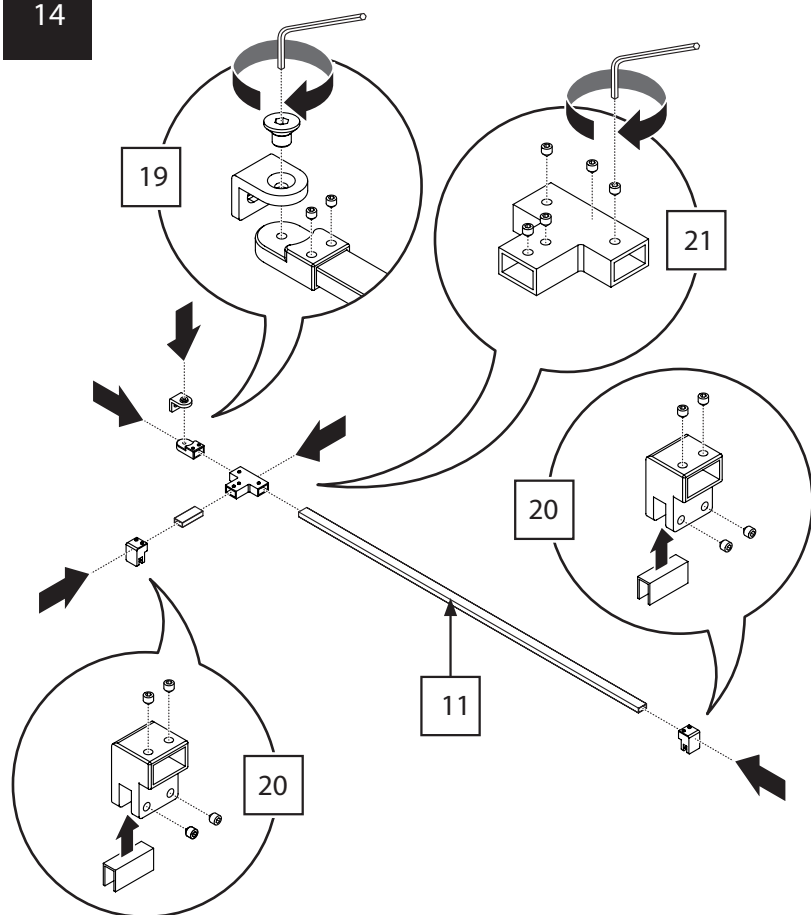
13.1



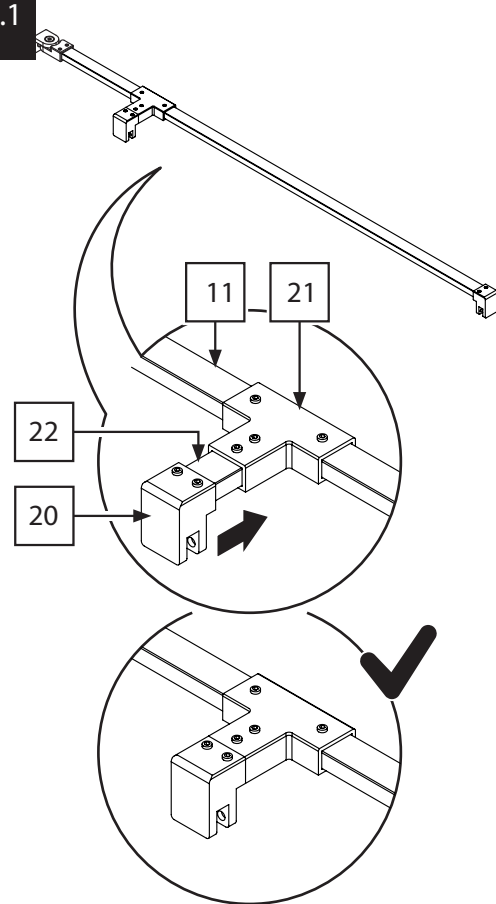
13.2



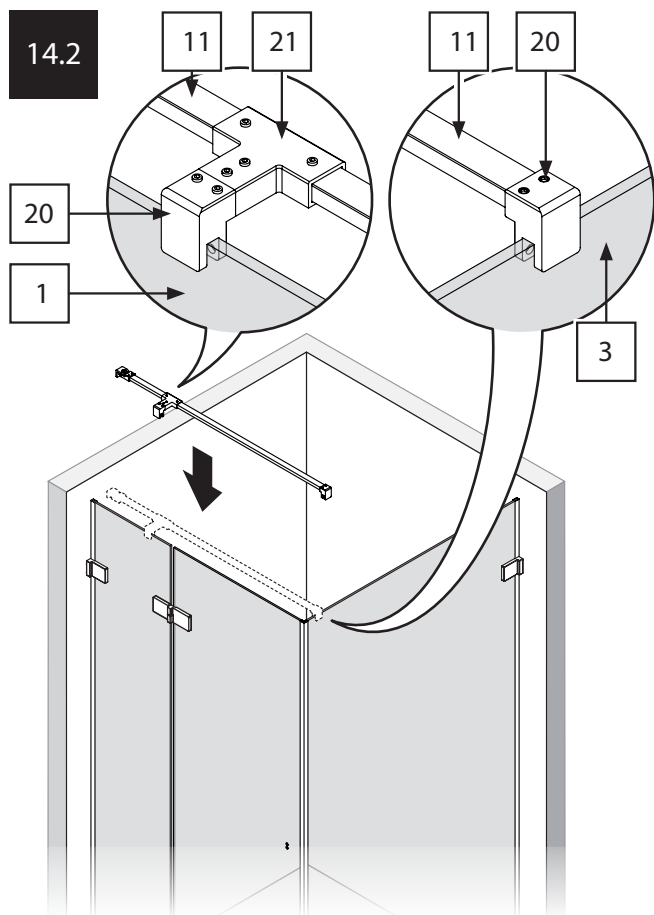
14



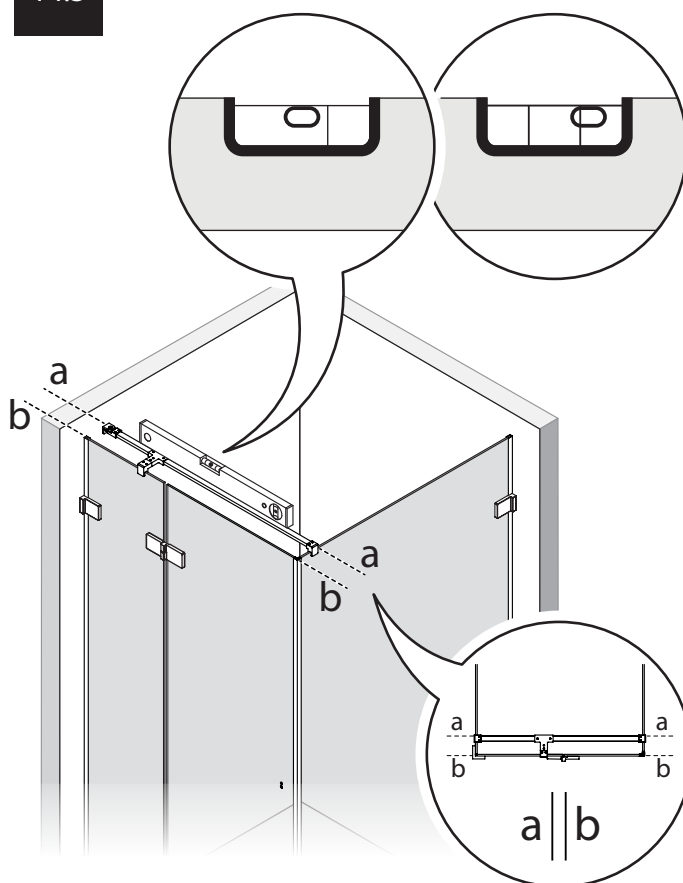
14.1



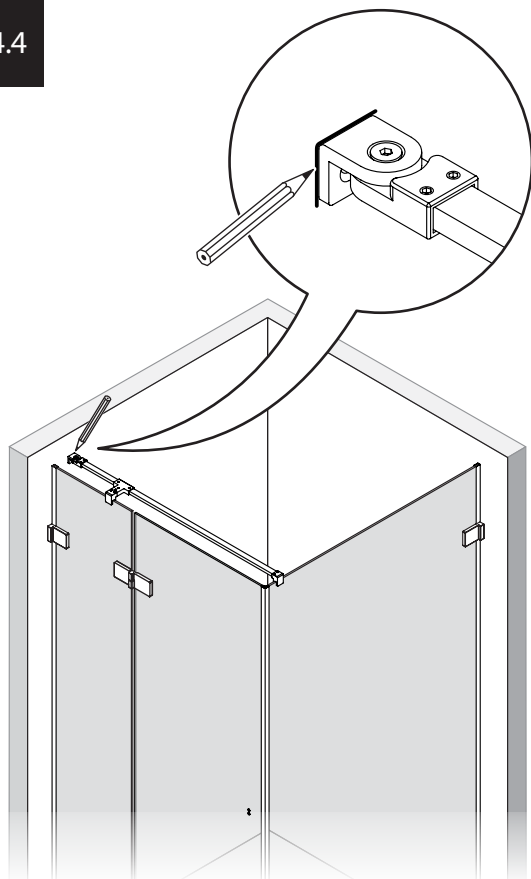
14.2



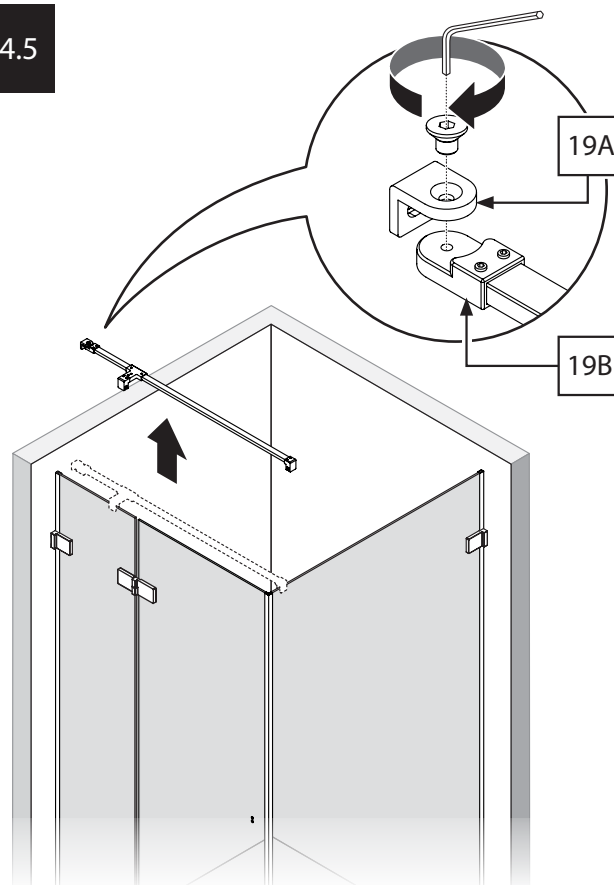
14.3



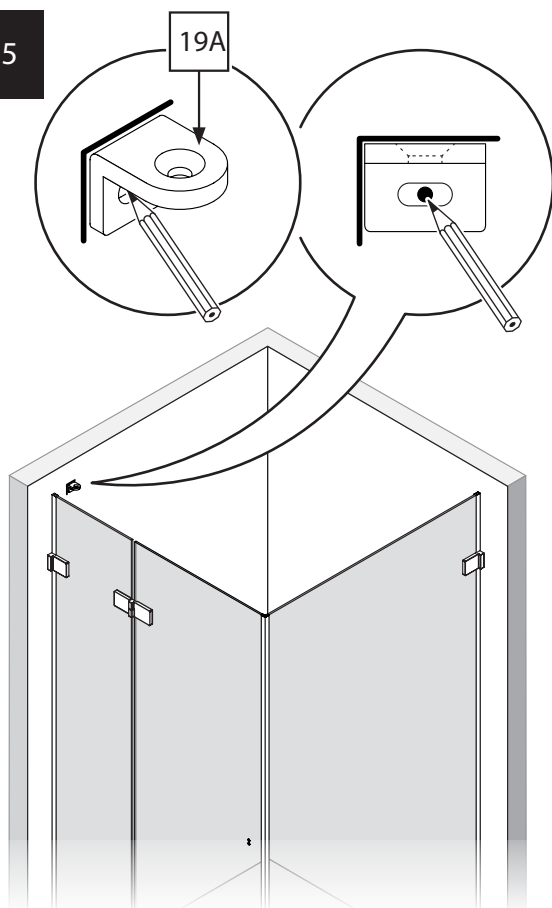
14.4



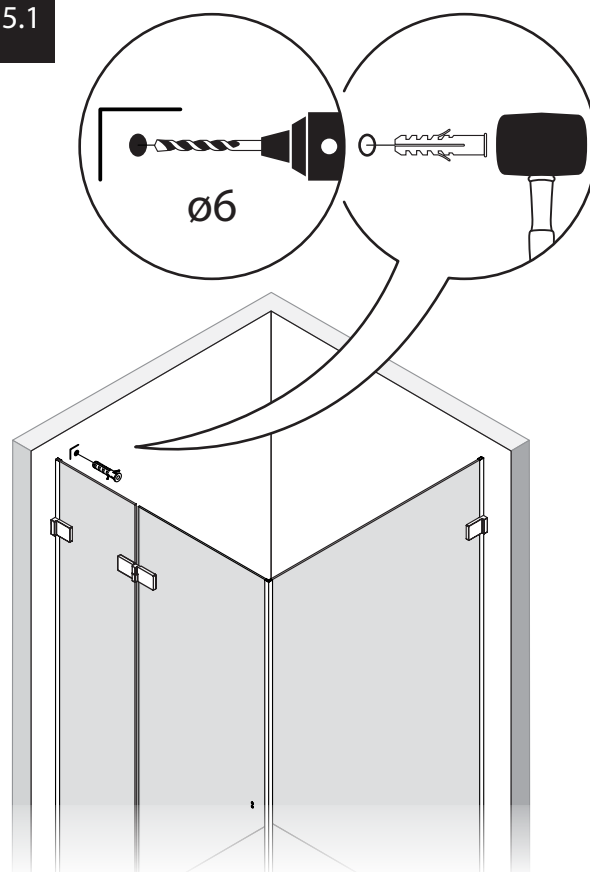
14.5



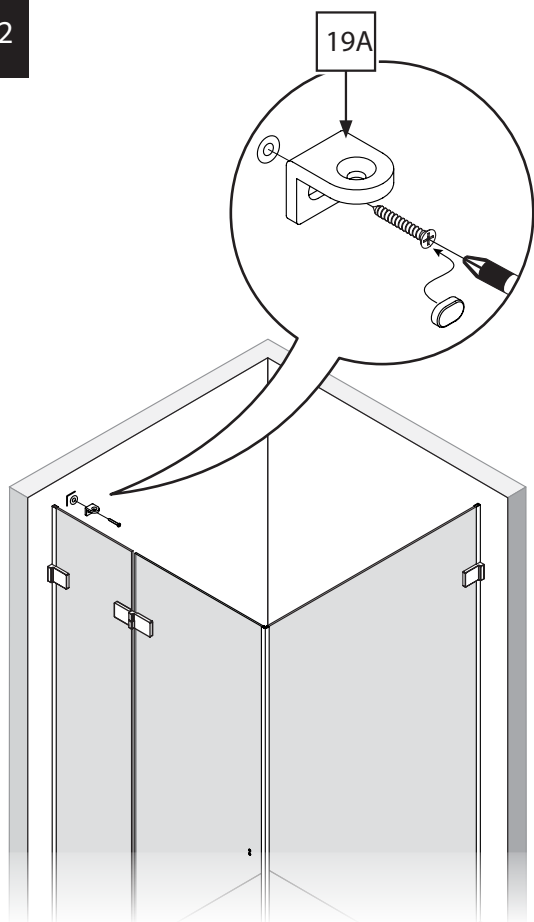
15



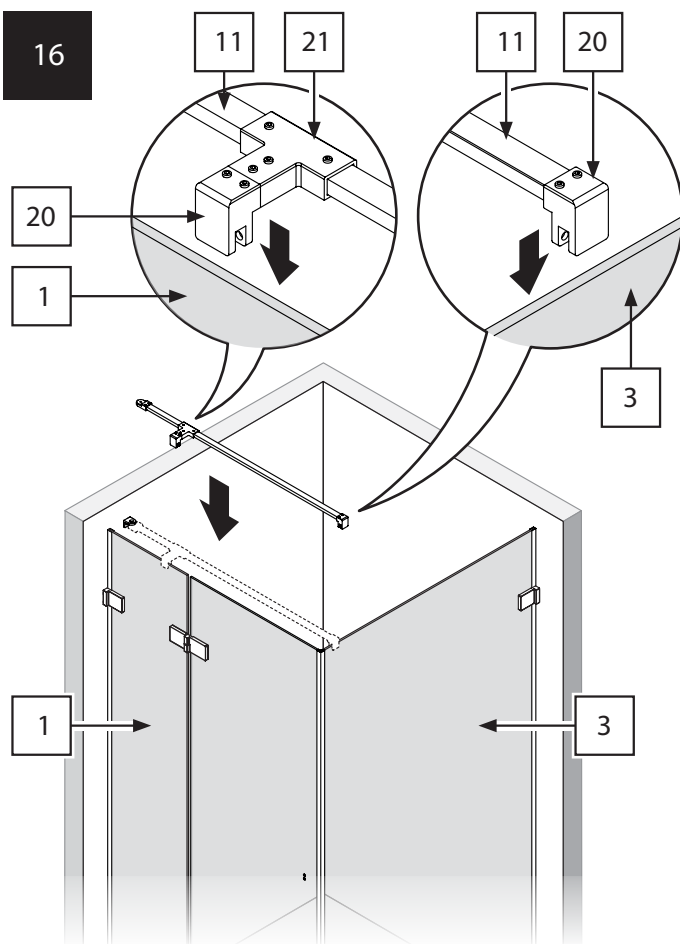
15.1



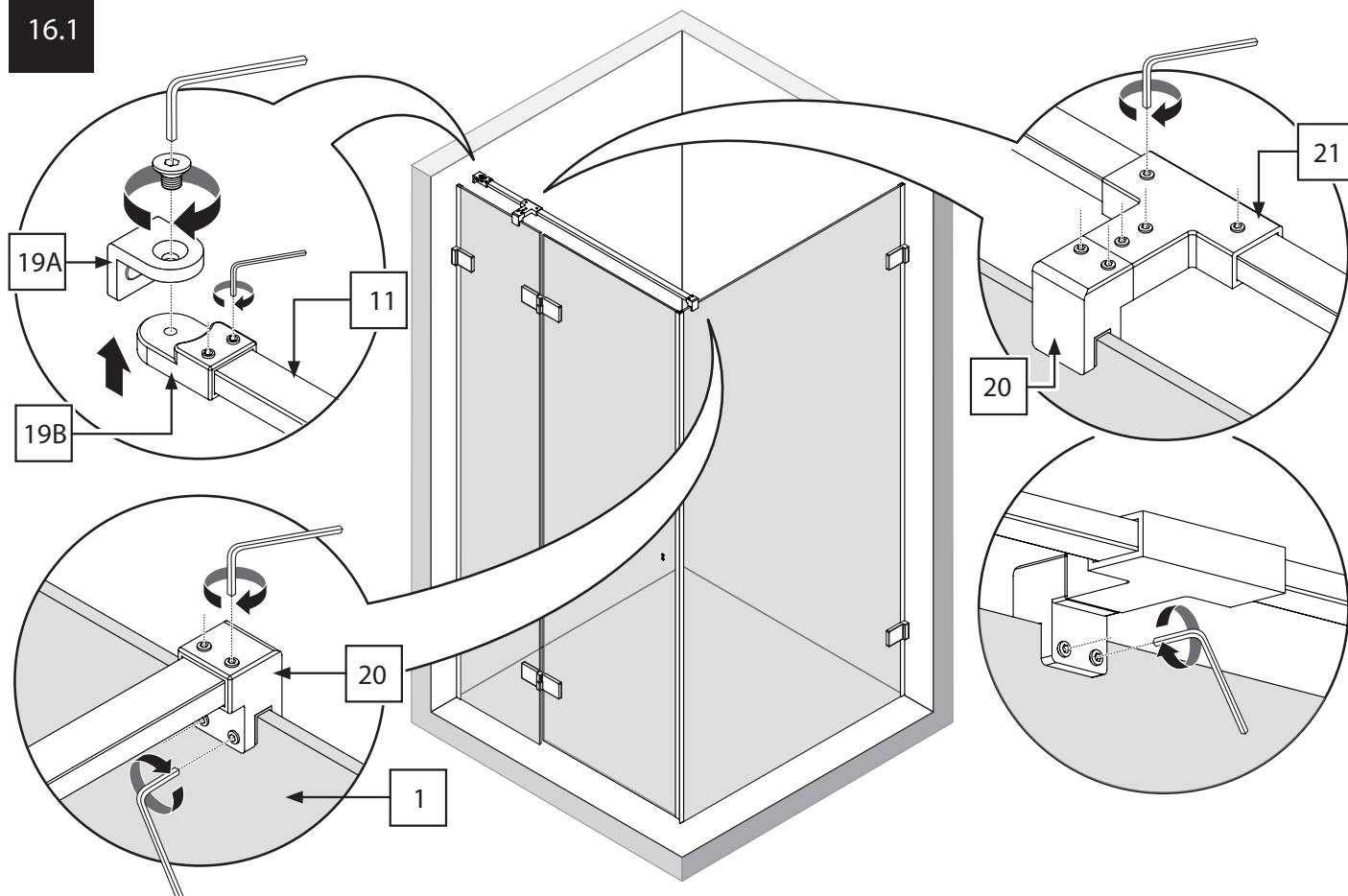
15.2



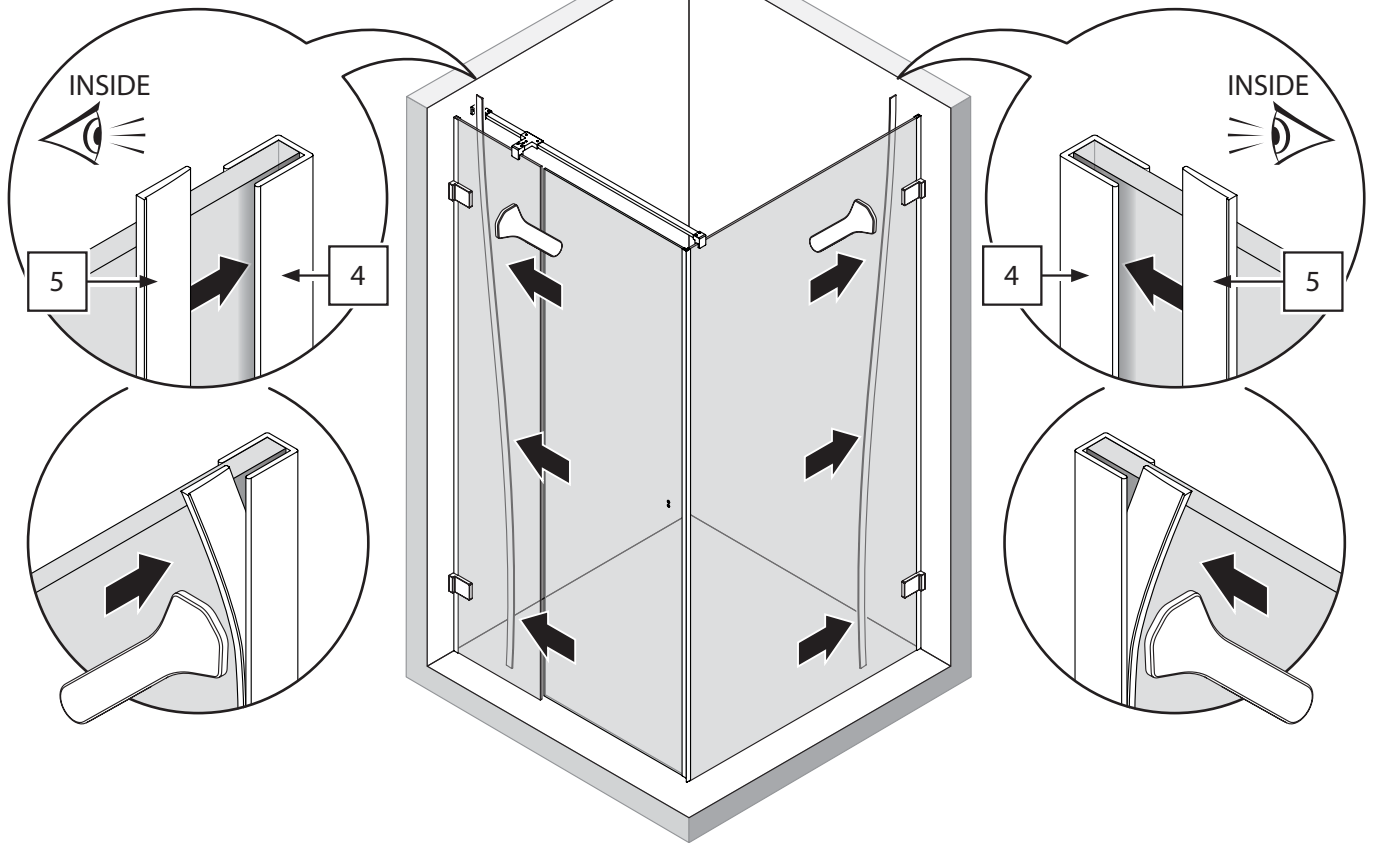
16



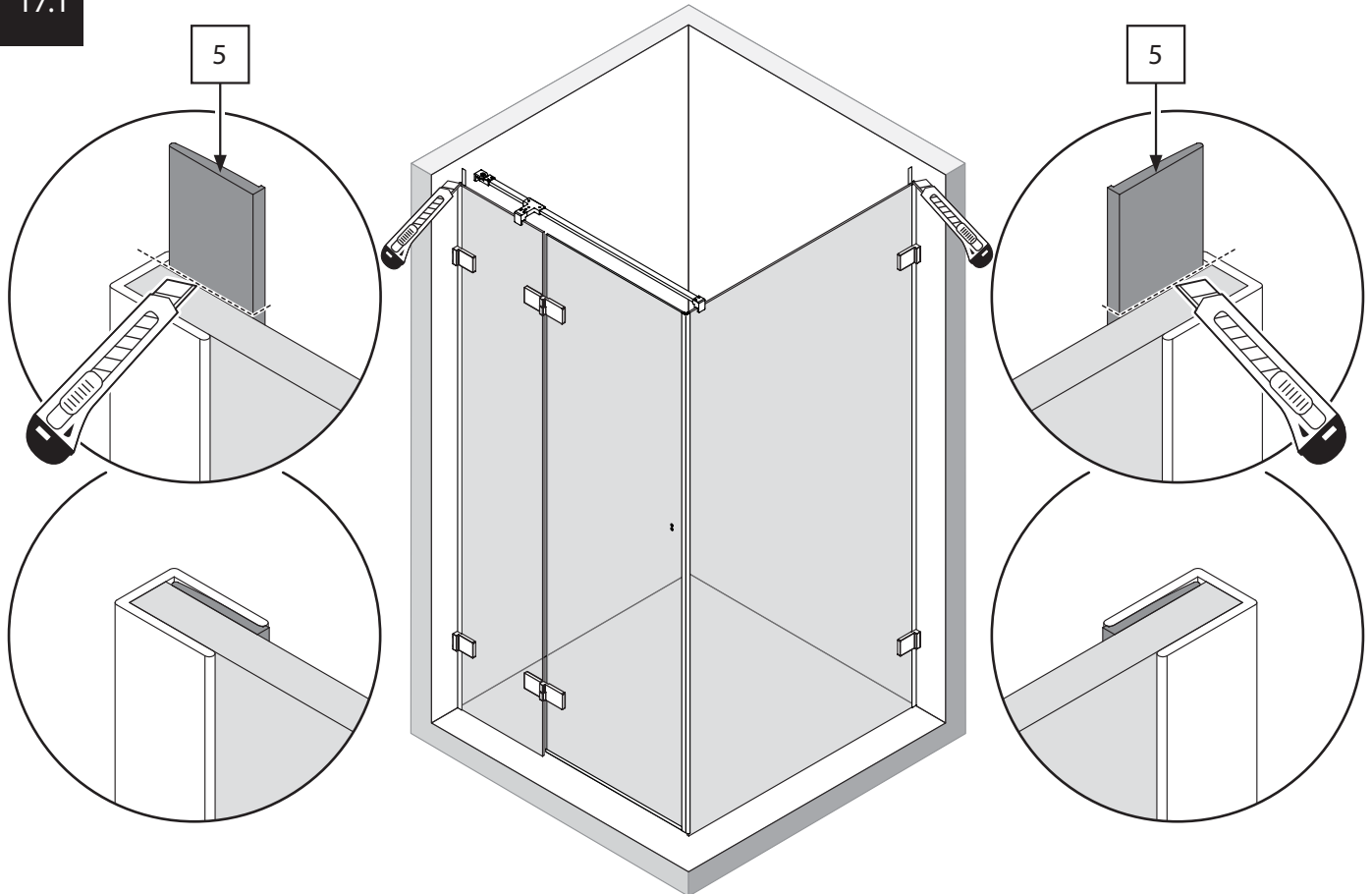
16.1



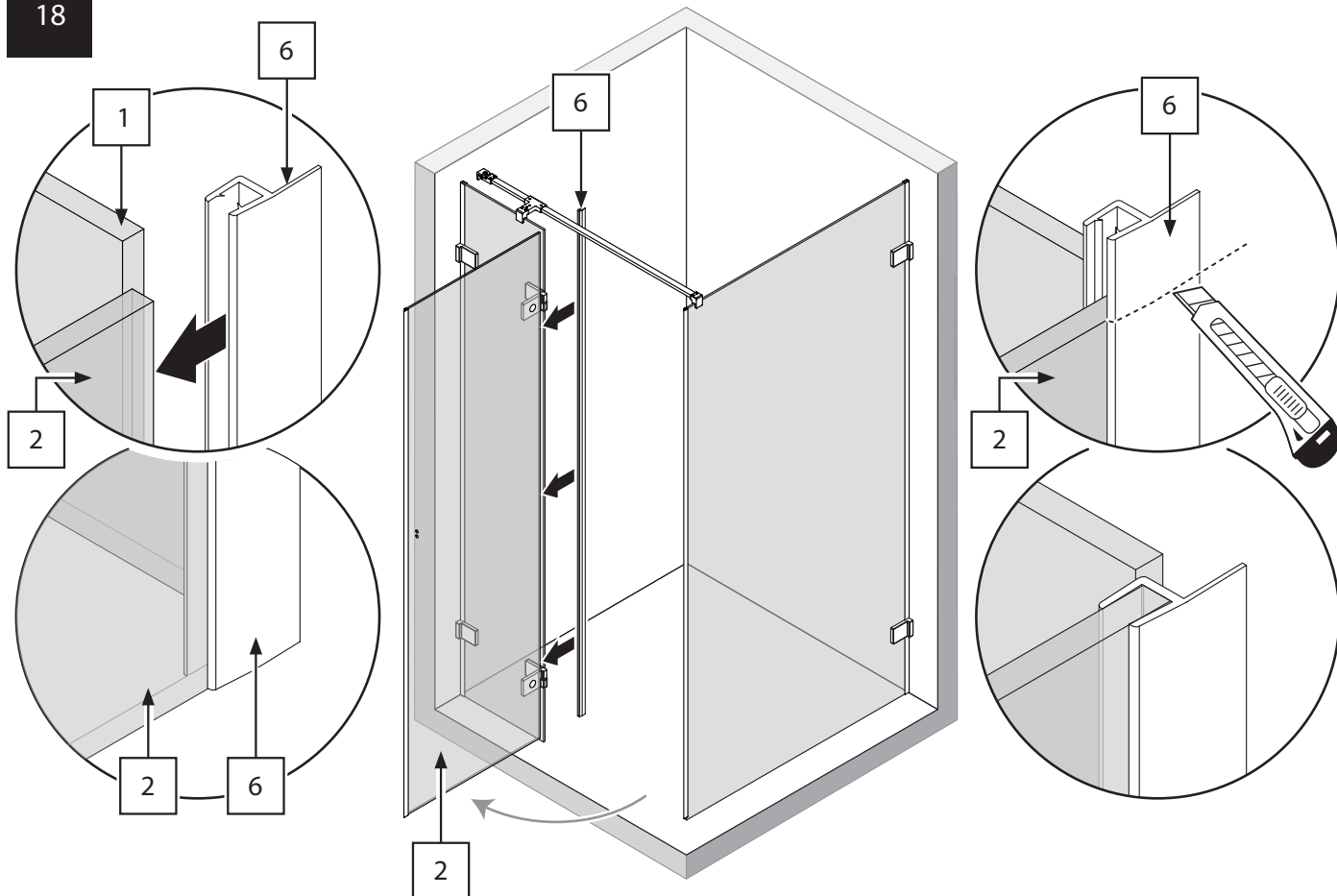
17



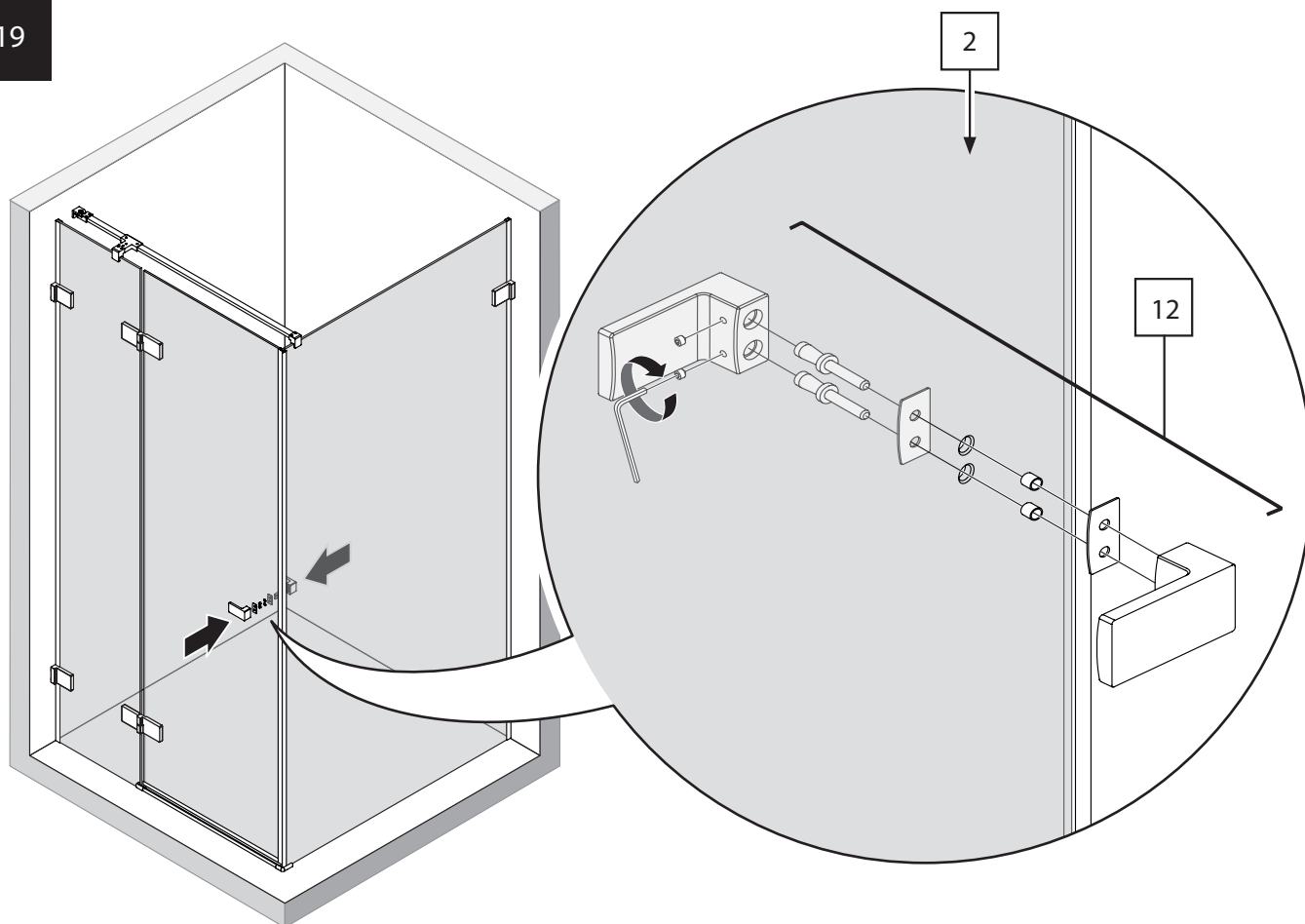
17.1



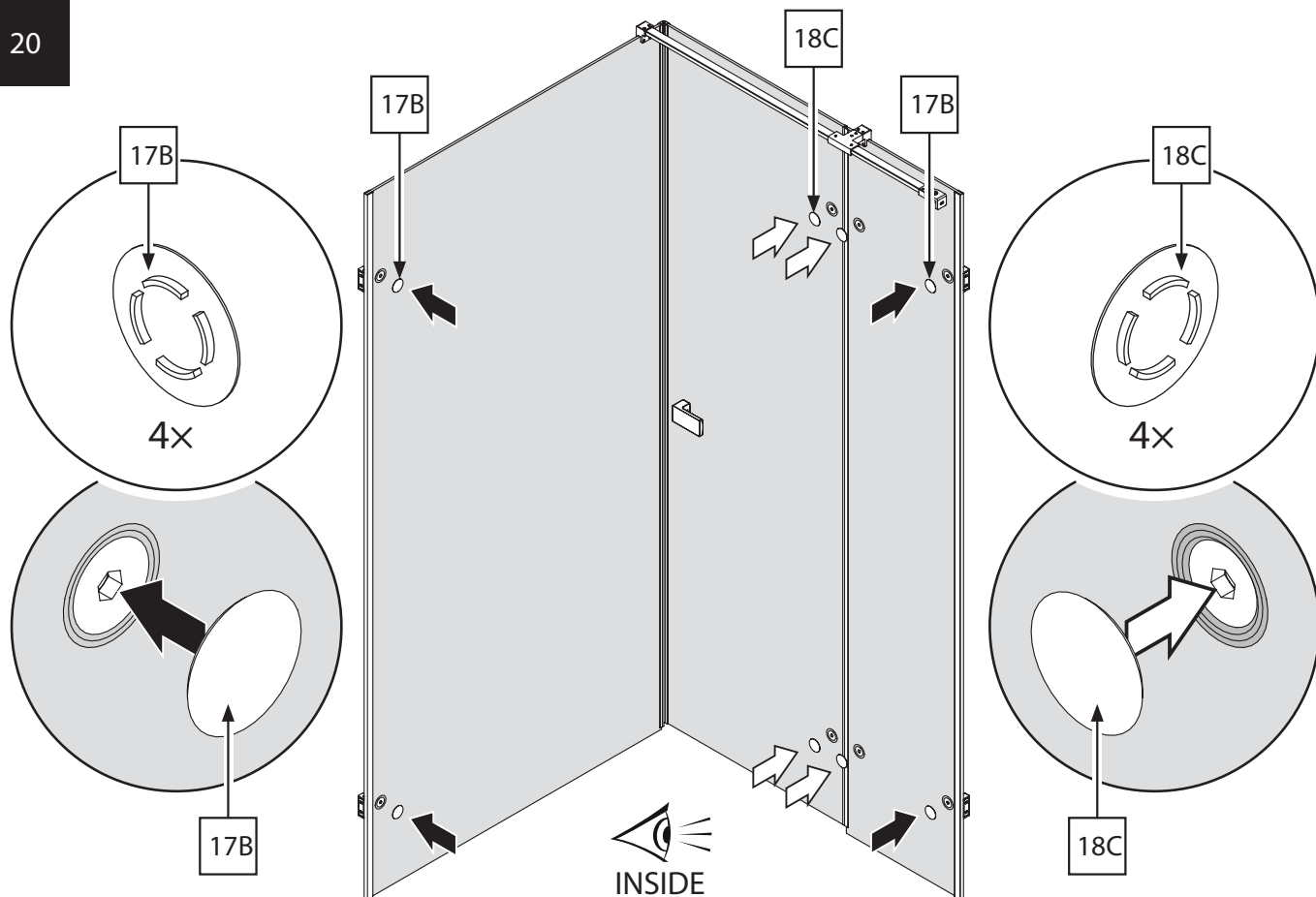
18



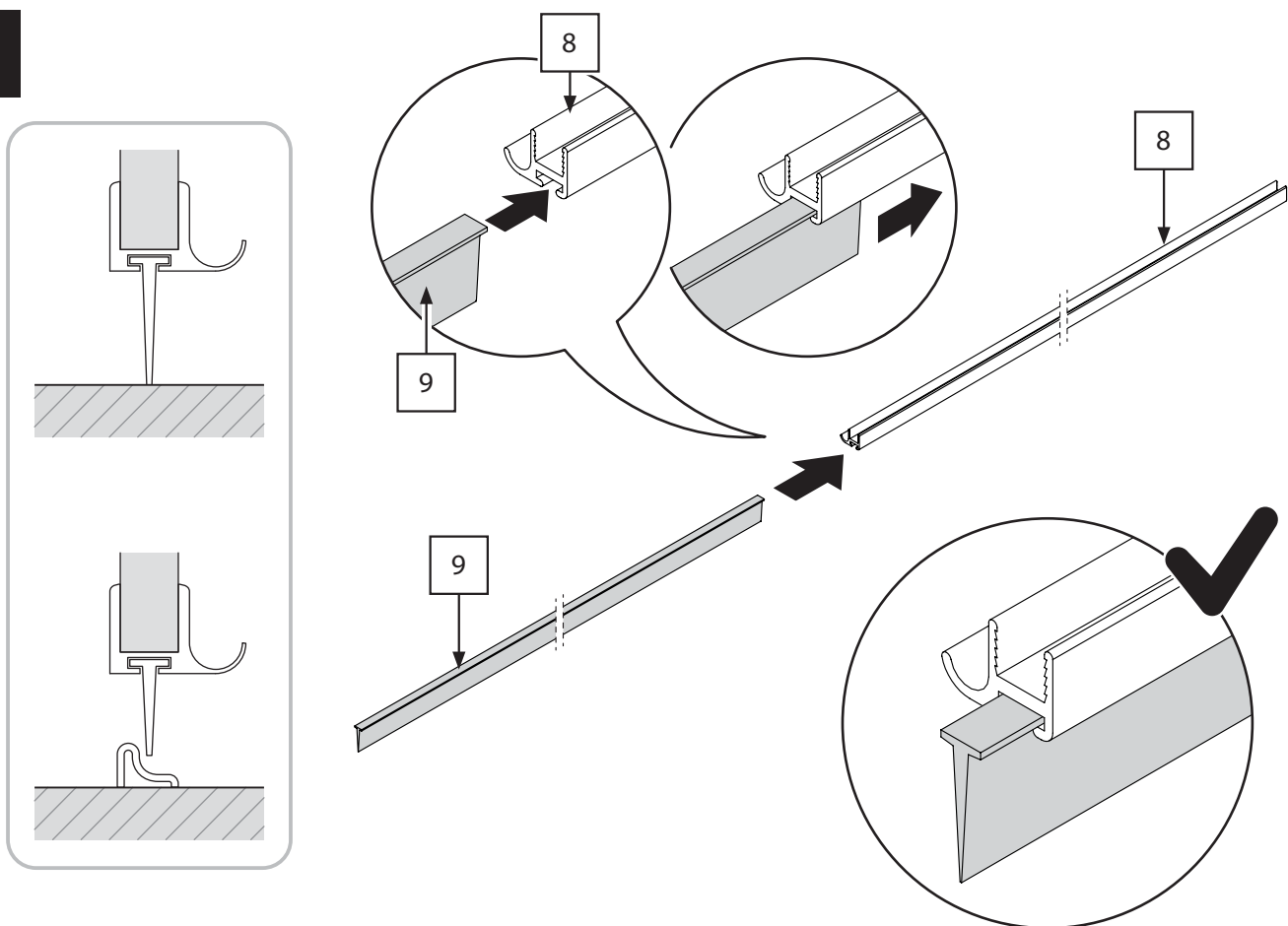
19



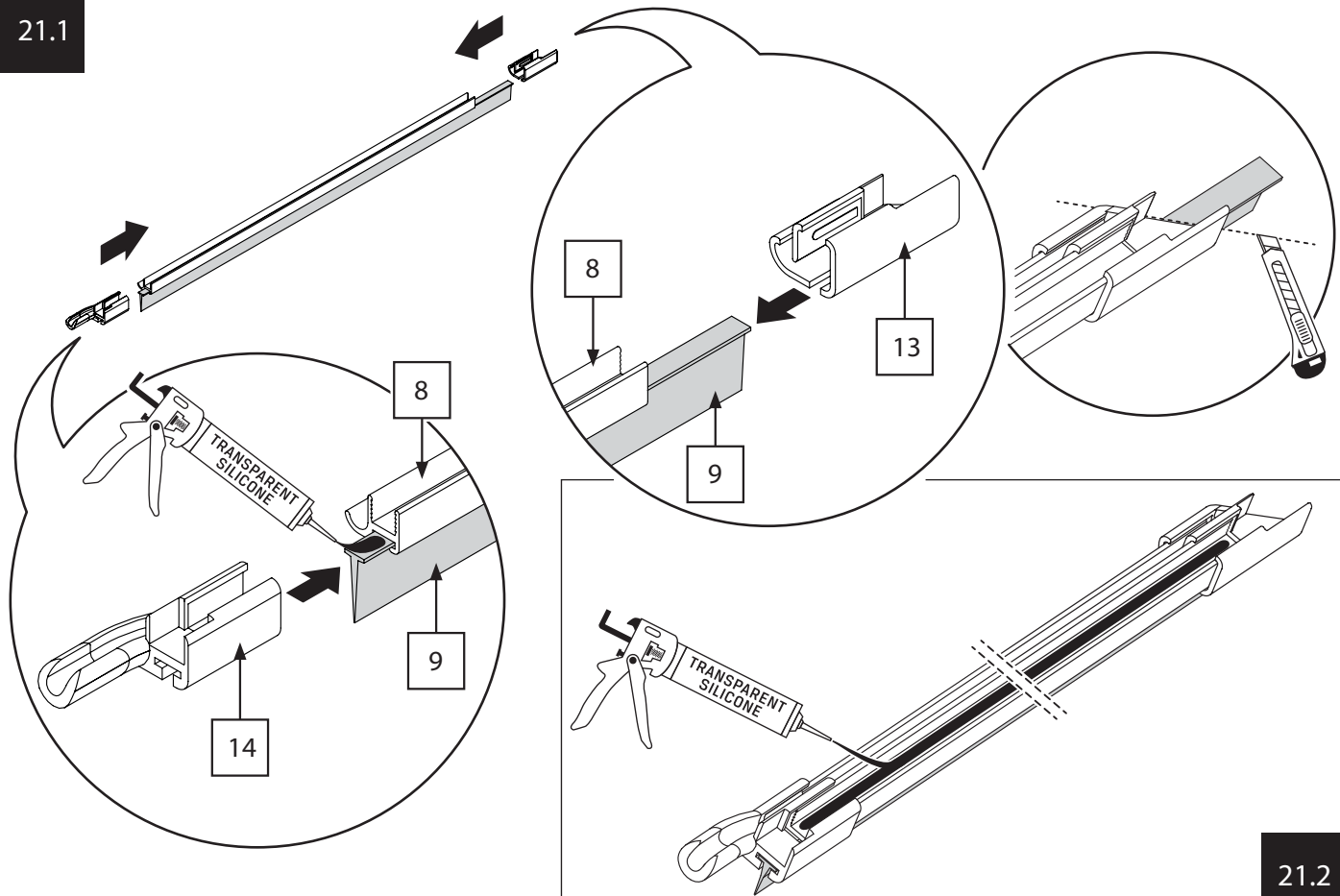
20



21

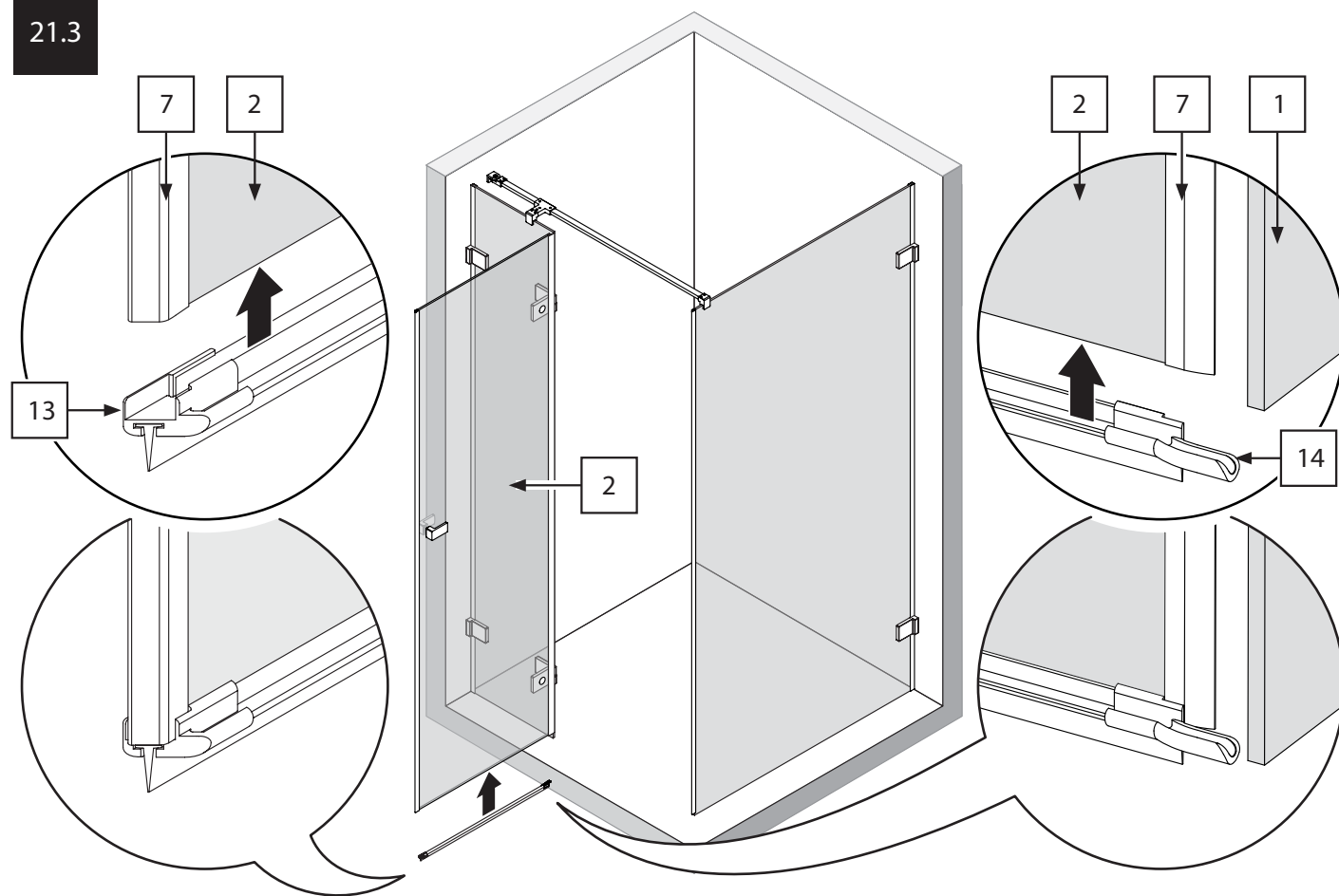


21.1

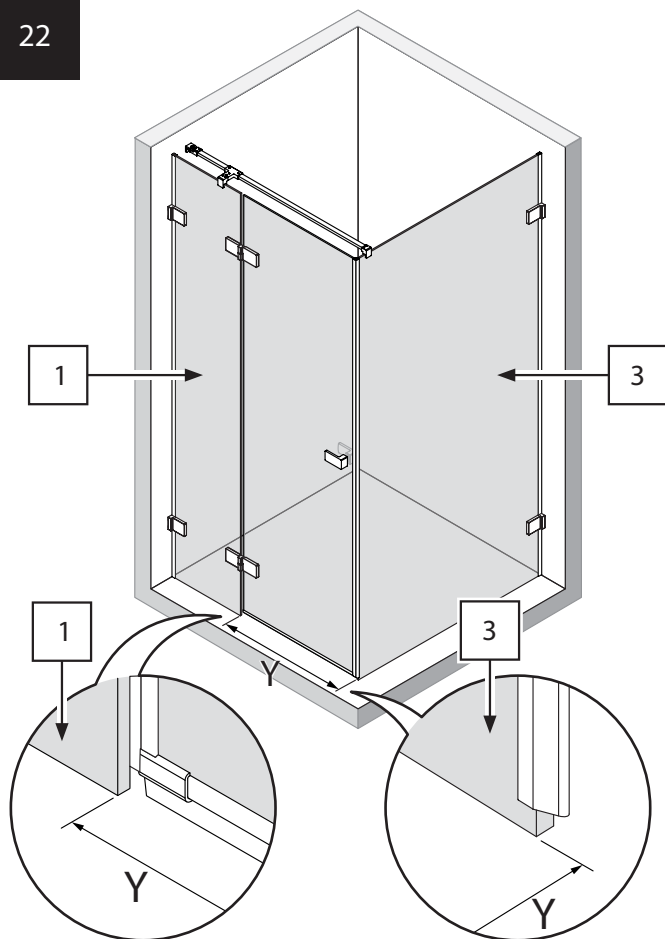


21.2

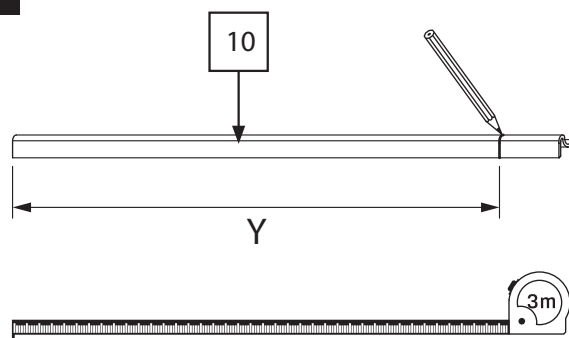
21.3



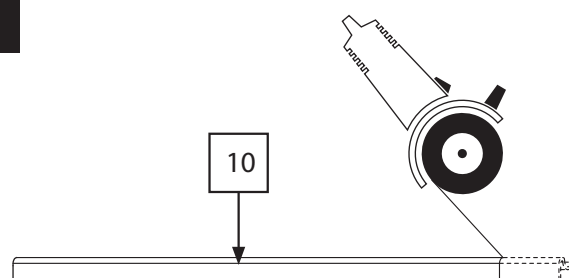
22



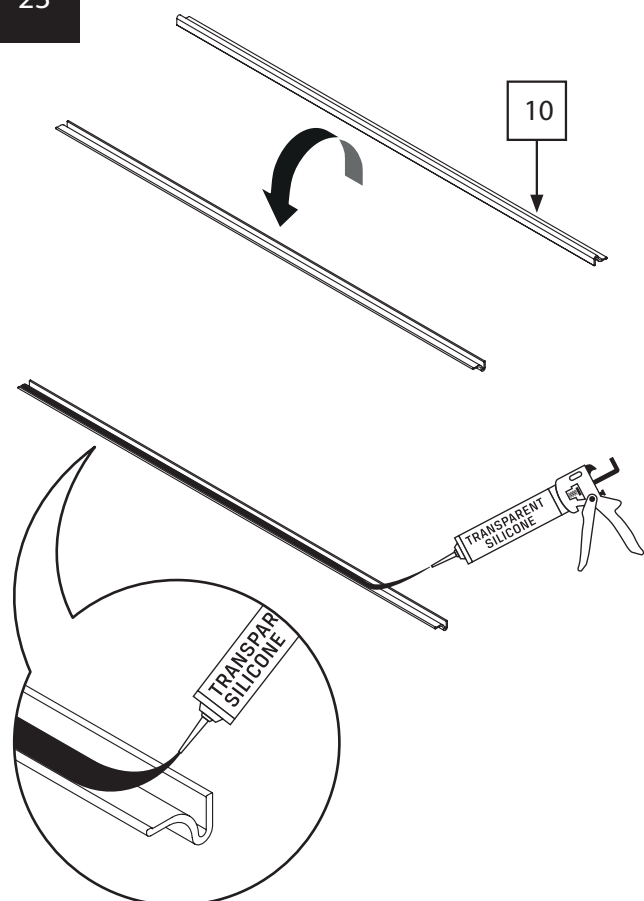
22.1



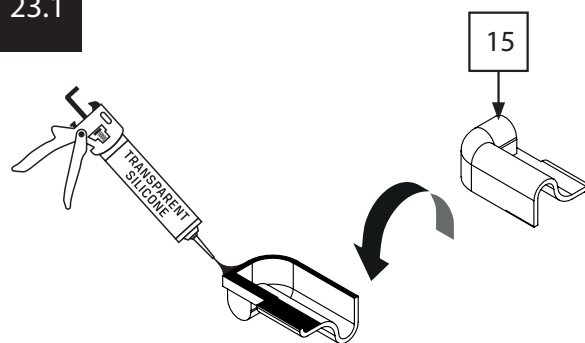
22.2



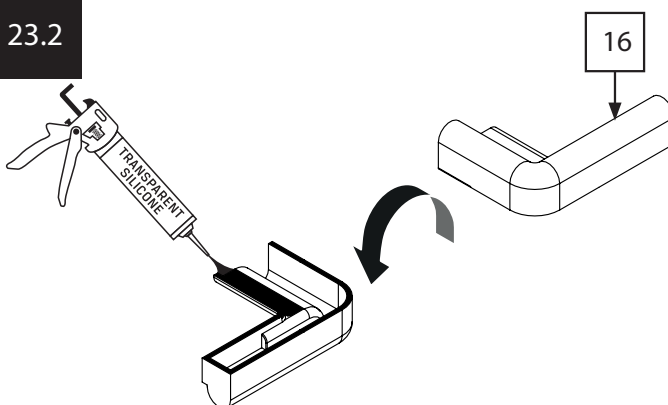
23



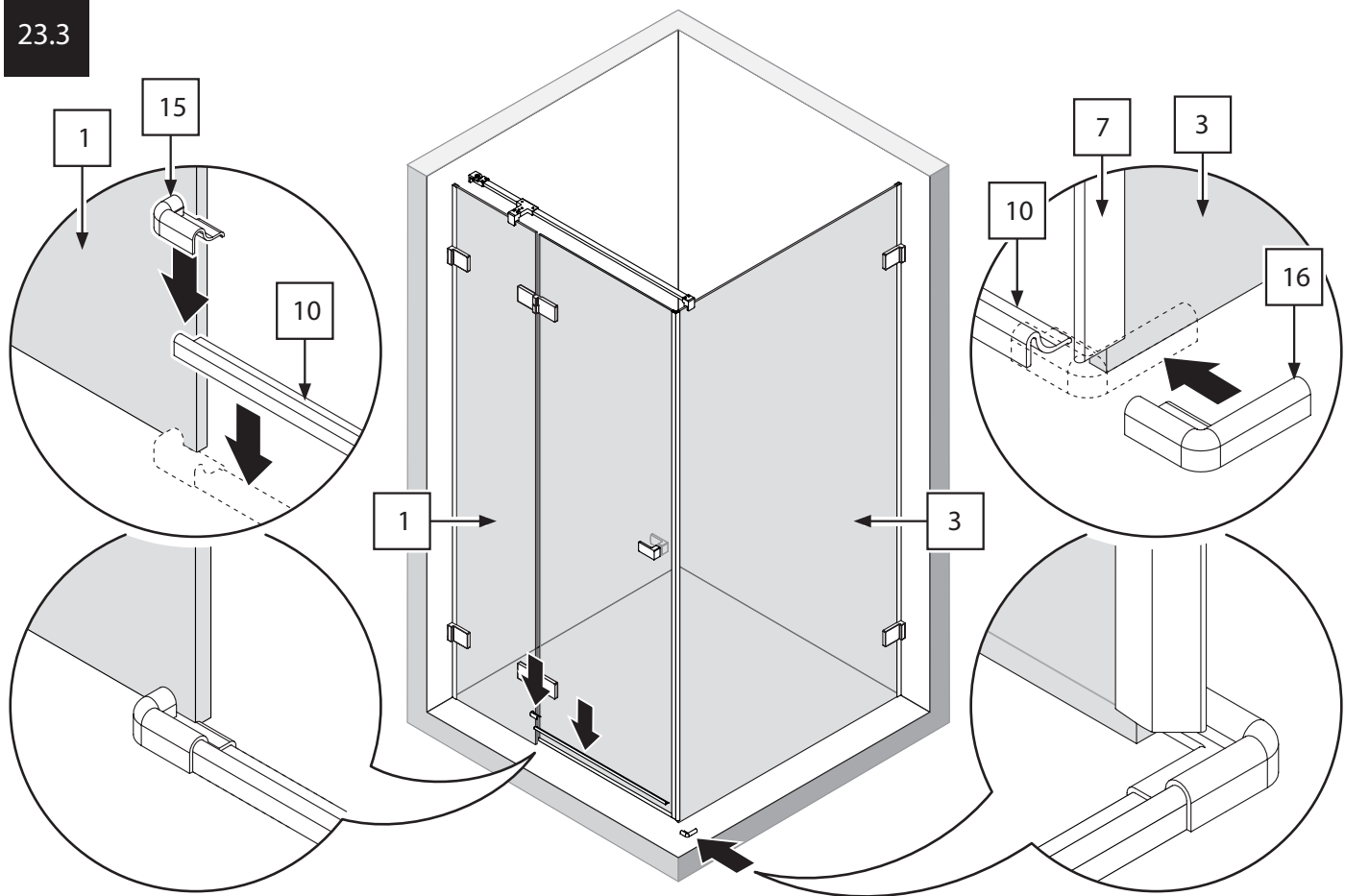
23.1



23.2



23.3



24

